

Cantilever Gates

Cantilever Gates Hardware

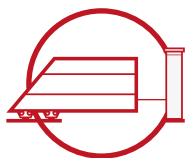
Cantilever Gates





Cantilever Gates Hardware

 **COMUNELLO** **GATE**



Cantilever gate



End cup



- ART.
- CG-25P
- CG-30P
- CG-25M
- CG-30M

Bottom end cup



- ART.
- 203
- CGS-346M
- CGS-346P
- CGi-346P



Carriages

| | | | |
|------------------|------------|-------------|---------------|
| ART. | CGS-250.5M | CGS-350.5M | CGS-350.8M |
| KIT CGS-150-300K | CGS-250.5P | CGS-350.5P | CGS-350.8P |
| KIT CGS-150-600K | CGS-250.5G | CGS-350.5G | CGS-350.8G |
| KIT CGA-150-300K | CGS-250.8M | CGS-350.5XL | CGS-WB-350.9P |
| KIT CGA-150-600K | CGS-250.8P | CGA-350.5M | CGS-WB-350.9G |
| | CGS-250.8G | CGA-350.5P | CGS-450.9-20K |
| | | CGi-350.5P | |



Guide plates



| | | |
|------|------|---------|
| ART. | 252 | 257 |
| 247 | 253 | 258 |
| 250 | 255 | CG-251 |
| 250i | 255i | CGi-251 |
| 251 | 256 | CG-252 |

End stopper for monorail



| |
|----------|
| ART. |
| CG-20M |
| CG-20P |
| CG-20G |
| CG-21M |
| CG-21P |
| CGS-347M |
| CGS-347P |
| CGS-347G |



Tracks



| |
|----------|
| ART. |
| CGS-245M |
| CGS-245P |
| CGS-245G |

Racks



| |
|------|
| ART. |
| 260 |
| 260i |
| 261 |
| 262 |
| 262i |

For the complete gate configurator go to www.comunello.com > gate > configurators

CANTILEVER GATE SYSTEM

Wheels

150 SERIES



Kit for cantilever residential gates up to 6 meters and 600kg. Available in the "MINI" versions for gates up to 3m / 300k and "PICCOLO" for gates up to 6m / 600kg.

CGS-150.5



CGA-150.5 — Aluminium



250 SERIES



Carriages with multiplate body for residential and industrial cantilever gates. 5-wheel and 8 wheels versions available in the "MINI", "PICCOLO", "GRANDE" sizes.

CGS-250.5



CGS-250.8



350/450 SERIES



Top series of Comunello with monobloc body for residential and industrial self-supporting gates. 5, 8 and 9 wheels versions available in the "MINI", "PICCOLO", "GRANDE" and "XL" sizes.

CGS-350.5



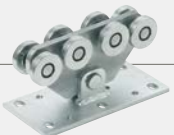
CGA-350.5 — Aluminium



CGi-350.5 — S. Steel



CGS-350.8



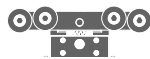
CGS-350.9



CGS-450.9



500 SERIES



Integrator

New cantilever system with integrated transmission gears and protected internal rack. Totally compatible with Comunello cantilever systems.

CGS-500.8



600 SERIES

Bullet

New revolutionary mono carriage cantilever system that simplifies both the configuration and installation.

CGS-600.18



CGA-600.10 — Aluminium



Range

Use

Page

Residential

Industrial

KIT CGS-150-300K



112

KIT CGS-150-600K



114

KIT CGA-150-300K



116

KIT CGA-150-600K



118

CGS-250.5M



120

CGS-250.5P



122

CGS-250.5G



124

CGS-250.8M



126

CGS-250.8P



128

CGS-250.8G



130

CGS-350.5M



132

CGS-350.5P



134

CGS-350.5G



136

CGS-350.5XL



138

CGA-350.5M



140

CGA-350.5P



142

CGi-350.5P



144

CGS-350.8M



146

CGS-350.8P



148

CGS-350.8G



150

CGS-WB-350.9P



152

CGS-WB-350.9G



154

CGS-450.9-20K



156

CGS-500.8M



68

CGS-500.8P



69

CGS-500.8G



70

CGS-600.18M



88

CGS-600.18P



90

CGA-600.10M



92

CGA-600.10P



94

Life made easy

New 9 wheels carriages



Piccolo

Grande



New series of 9-wheel cantilever trolleys. Available in "Piccolo" e "Grande" versions.

New generation shielded bearings suitable for extreme temperatures from -30 to + 80° c.

Monobloc steel body.



Replaceable wheels

Alignment Central wheel

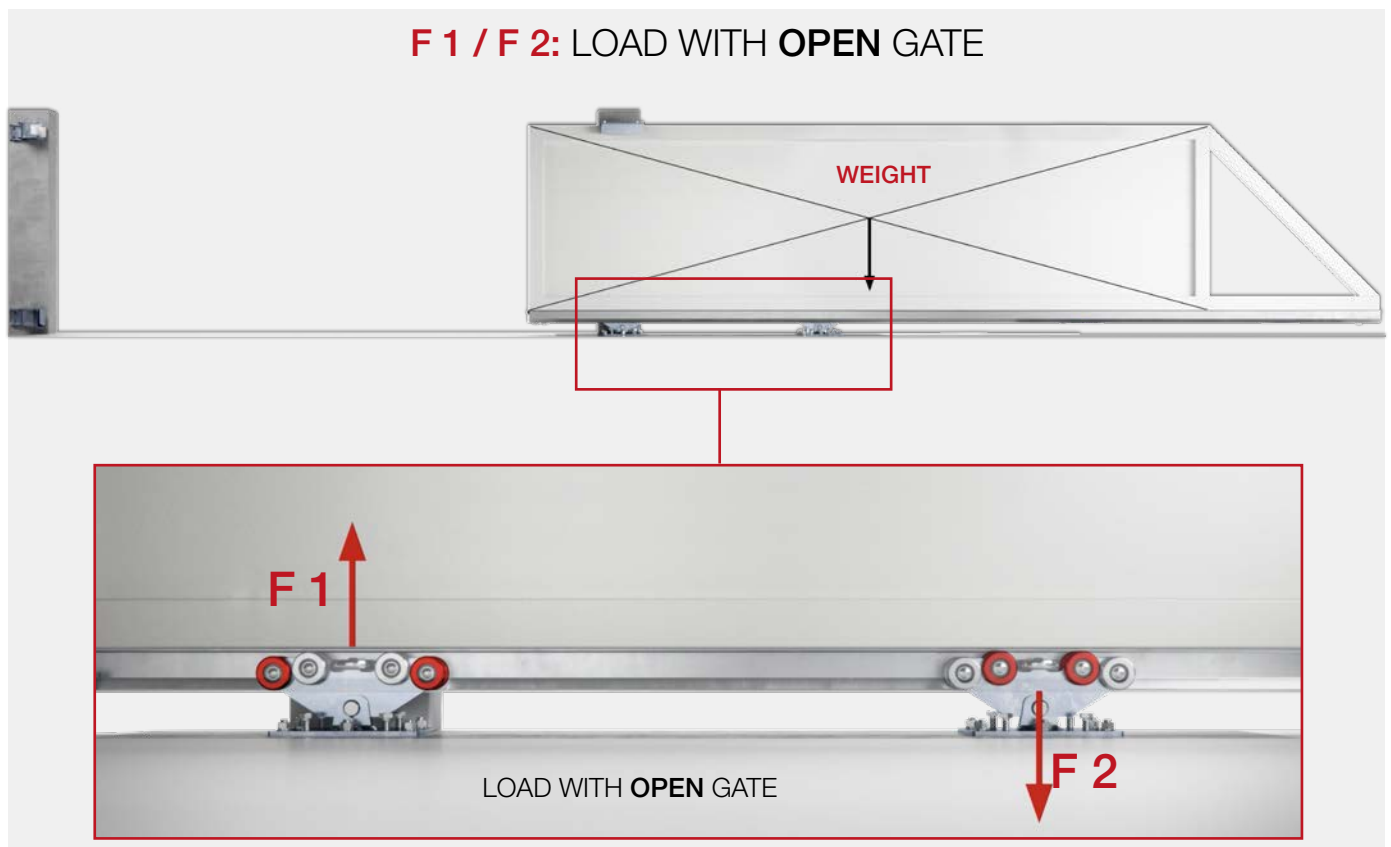
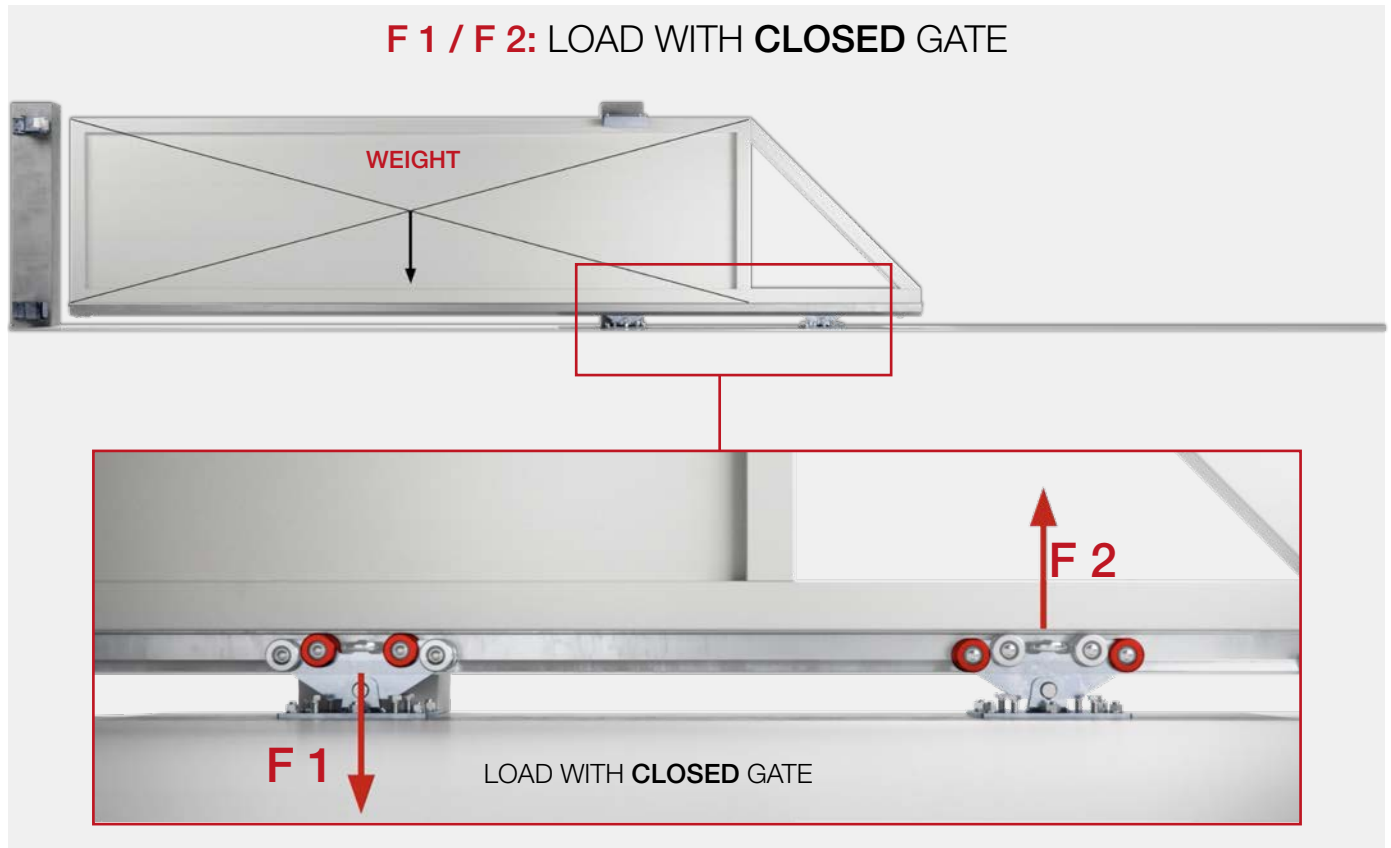
The positioning of the wheels on 2 different heights allows you to load the wheels alternately.

Adjustment screws for planarity.

The slots allow you to adjust the position of the trolley even after installing the anchors.

The central pin allows the trolley to rotate and adapt to the movement of the gate, the load is always evenly distributed on 4 wheels.

Distribution of the load on the wheels during the movement of the gate



CANTILEVER GATE

Life made easy

KIT 150-300K

PATENTED

Kit for cantilever gates, weight up to 3 m and 300 kg / Kit pour portails autoportants jusqu'à 3m et 300 kilos de poids / Kit für selbsttragende Tore mit Gewicht bis 3m und 300 kg / Kit para puertas autoportantes de hasta 3 m y 300 kg de peso / Комплект для самонесущих ворот до 3 м и 300 кг веса

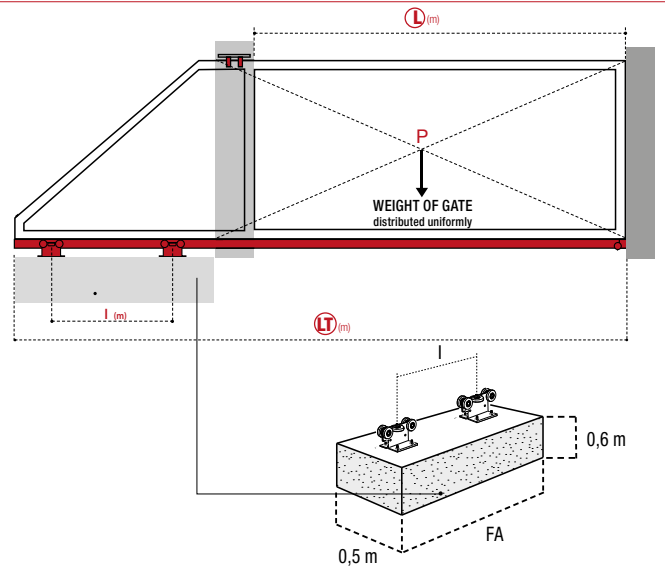


| CODE | ART. | CGS-150.5M | CGS-347M | CGS-346M | 230 | 255 | CGS-245M |
|----------|-----------------------|------------|----------|----------|---------|---------------|----------|
| 19912331 | KIT 150-300K TOP 6M | 2 Mini | 1 | 1 | - | 1 (220 / Ø30) | 1 (6 m) |
| 19912330 | KIT 150-300K TOP 3M | 2 Mini | 1 | 1 | - | 1 (220 / Ø30) | 2 (3 m) |
| 19912333 | KIT 150-300K BASIC 6M | 2 Mini | 1 | 1 | 4 x Ø30 | - | 1 (6 m) |
| 19912326 | KIT 150-300K BASIC 3M | 2 Mini | 1 | 1 | 4 x Ø30 | - | 2 (3 m) |

Minimum dimensions of the reinforced concrete casting
 Dimensions minimums du coulage du ciment armé - Mindestgröße des Stahlbetonguss
 Dimensiones mínimas colada cemento armado
 Минимальные размеры железобетонной стяжки

| CGS 150.5 Mini Capacity = 700 kg | | | | | | |
|----------------------------------|--------|-------|---------|-------|--------|-------|
| P | L=2 m | | L=2,5 m | | L=3 m | |
| Weight (Kg) | FA (M) | I (M) | FA (M) | I (M) | FA (M) | I (M) |
| 100 | 0,90 | 0,30 | 1,00 | 0,40 | 1,00 | 0,40 |
| 125 | 1,00 | 0,40 | 1,00 | 0,40 | 1,10 | 0,50 |
| 150 | 1,00 | 0,40 | 1,10 | 0,50 | 1,20 | 0,60 |
| 200 | 1,20 | 0,60 | 1,30 | 0,70 | 1,40 | 0,80 |
| 250 | 1,40 | 0,80 | 1,50 | 0,90 | 1,70 | 1,10 |
| 300 | 1,60 | 1,40 | 1,80 | 1,30 | 2,10 | 1,50 |

Nevertheless, it is advisable a minimum wheelbase (I) of about 1/3 of the length (L)
 Cependant, il est conseillé un entraxe minimal (I) de 1/3 de la longueur (L)
 Die empfohlene Strecke (I) 1/3 ist mindestens ein Drittel der Länge (L)
 Se recomienda una distancia mínimo entre ejes (I) de 1/3 de la longitud (L)
 Минимальные размеры железобетонной стяжки

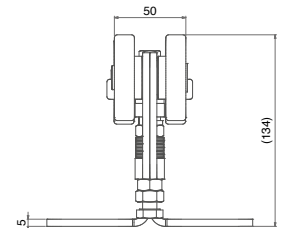
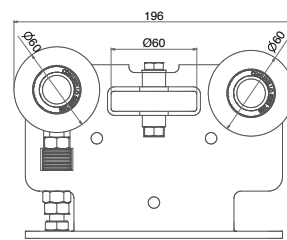
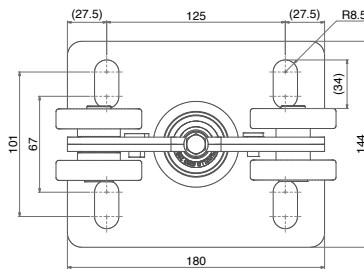


CGS-150.5M

5 wheels cantilever carriage for gates
 Chariot autoportant 5 roues pour portails
 5-rädiger Laufwagen für freitragende Tore
 Carro autoportante 5 ruedas para puertas correderas
 Самонесущая тележка 5 колес для откатных ворот

| CODE | ART. | Size | Box info | |
|--------------|-------------|------|--------------|-----|
| | | | Pcs per pack | Kg |
| 10130019 001 | CGS-150.5 M | Mini | 1 | 5,4 |

Finishing: Galvanized

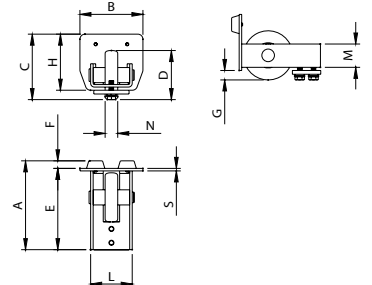


CGS-347M

End wheel for monorail
 Galet d'extrémité pour rail
 Endrad für Einzelschiene
 Rueda terminal para monocarril
 Концевое колесо монорельса

| CODE | ART. | Size | A | B | C | D | E | F | G | H | L | M | N | S | Box info | |
|--------------|----------|------|-----|----|------|------|-----|----|------|----|----|----|----|---|--------------|------|
| | | | | | | | | | | | | | | | Pcs per pack | Kg |
| 10705001 001 | CGS-347M | Mini | 135 | 68 | 82,5 | Ø 68 | 123 | 12 | 14,5 | 68 | 45 | 32 | 15 | 4 | 2 | 2,00 |

Finishing: Galvanized



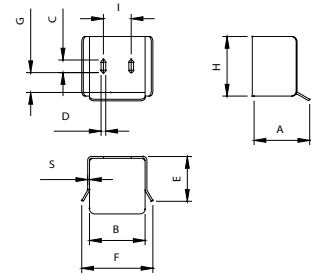
CGS-346M

Bottom end cup to be fixed
 Butée inférieure à fixer
 Unterauflageschuh zum Aufschrauben
 Encuentro inferior para fijar
 Прикрепляемый нижний упор



| CODE | ART. | Size | A | B | C | D | E | F | G | H | I | S | Box info | |
|--------------|----------|------|-----|----|----|---|----|-----|----|----|----|---|--------------|------|
| | | | | | | | | | | | | | Pcs per pack | Kg |
| 10705501 001 | CGS-346M | Mini | 104 | 78 | 25 | 9 | 75 | 114 | 25 | 91 | 38 | 4 | 2 | 2,30 |

Finishing: Galvanized



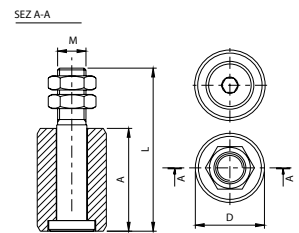
230

Nylon roller
 Rouleau en nylon
 Nylon-Führungsrolle
 Encuentro inferior para fijar
 Прикрепляемый нижний упор



| CODE | ART. | A | B | D | I | H | Box info | |
|--------------|--------|----|-----|----|-----|----|--------------|------|
| | | | | | | | Pcs per pack | Kg |
| 11301010 001 | 230-30 | 40 | Ø30 | 74 | M16 | 24 | 20 | 3,70 |

Finishing: Galvanized



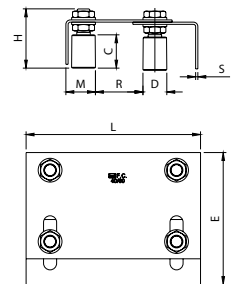
255

Guiding plate for gates with double adjustment
 Platine guide-portail à double réglage
 Torfführungsbügel mit Doppelverstellung
 Placa de guía de la puerta de doble regulación
 Пластина направляющая ворот с двойным регулированием



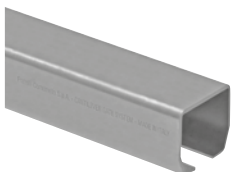
| CODE | ART. | Size | C | D | E | H | L | M | R | S | Box info | |
|--------------|---------|------|----|-----|---------|----|-----|----|-------|---|--------------|-------|
| | | | | | | | | | | | Pcs per pack | Kg |
| 11306005 001 | 255-220 | Ø30 | 40 | Ø30 | 135-175 | 74 | 220 | 38 | 35-62 | 3 | 10 | 22,70 |

Finishing: Galvanized



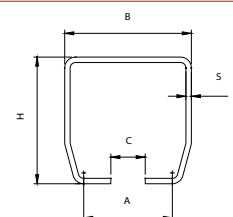
CGS-245M

Monorail for cantilever gates
 Rails pour portails autoportants
 Einfachschiene für selbsttragende Tore
 Monocarril para puertas autoportantes
 Монорейль для самонесущих ворот



| CODE | ART. | Size | A | B | C | H | S | L | Box info | |
|--------------|----------|------|----|----|----|----|-----|------|--------------|------|
| | | | | | | | | | Pcs per pack | Kg |
| 10207004 001 | CGS-245M | Mini | 48 | 68 | 23 | 68 | 3,5 | 3000 | 1 | 18,3 |
| 10207024 001 | CGS-245M | Mini | 48 | 68 | 23 | 68 | 3,5 | 6000 | 1 | 36,5 |

Finishing: Galvanized



CANTILEVER GATE

Life made easy

KIT 150-600K

PATENTED

Kit for cantilever gates, weight up to 6m and 600 kg / Kit pour portails autoportants jusqu'à 6m et 600 kilos de poids / Kit für selbsttragende Tore mit Gewicht bis 6m und 600 kg / Kit para puertas autoportantes de hasta 6 m y 600 kg de peso / Комплект для самонесущих ворот до 6 м и 600 кг веса

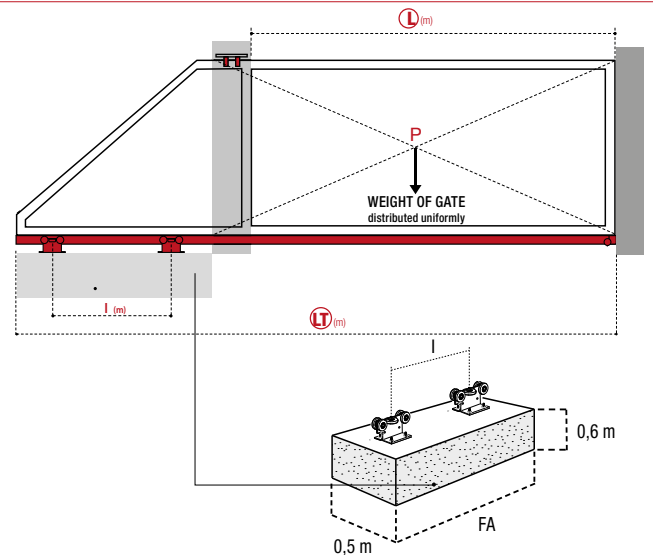


| CODE | ART. | CGS-150.5P | CGS-347P | CGS-346P | 230 | 255 | CGS-245P |
|----------|-----------------------|------------|----------|----------|---------|---------------|----------|
| 19912332 | KIT 150-600K TOP 6M | 2 Piccolo | 1 | 1 | - | 1 (350 / Ø40) | 2 (6 m) |
| 19912325 | KIT 150-600K TOP 3M | 2 Piccolo | 1 | 1 | - | 1 (350 / Ø40) | 3 (3 m) |
| 19912334 | KIT 150-600K BASIC 6M | 2 Piccolo | 1 | 1 | 4 x Ø40 | - | 2 (6 m) |
| 19912324 | KIT 150-600K BASIC 3M | 2 Piccolo | 1 | 1 | 4 x Ø40 | - | 3 (3 m) |

Minimum dimensions of the reinforced concrete casting
 Dimensions minimales du coulage du ciment armé - Mindestgröße des Stahlbetonguss
 Dimensiones mínimas colada cemento armado
 Минимальные размеры железобетонной стяжки

| CGS 150.5 Piccolo Capacity = 1300 kg | | | | | | |
|--------------------------------------|--------|-------|--------|-------|--------|-------|
| P | L=4 m | | L=5 m | | L=6 m | |
| | FA (M) | I (M) | FA (M) | I (M) | FA (M) | I (M) |
| 350 | 1,8 | 1,1 | 2,1 | 1,4 | 2,4 | 1,7 |
| 400 | 2,0 | 1,3 | 2,3 | 1,6 | 2,7 | 2,0 |
| 450 | 2,2 | 1,5 | 2,6 | 1,9 | 3,1 | 2,4 |
| 500 | 2,5 | 1,8 | 3,0 | 2,3 | 3,5 | 2,8 |
| 550 | 2,8 | 2,1 | 3,3 | 2,6 | 3,9 | 3,2 |
| 600 | 3,2 | 2,5 | 3,8 | 3,1 | 4,5 | 3,8 |

Nevertheless, it is advisable a minimum wheelbase (I) of about 1/3 of the length (L)
 Cependant, il est conseillé un entraxe minimal (I) de 1/3 de la longueur (L)
 Die empfohlene Strecke (I) 1/3 ist mindestens ein Drittel der Länge (L)
 Se recomienda una distancia mínimo entre ejes (I) de 1/3 de la longitud (L)
 Минимальные размеры железобетонной стяжки

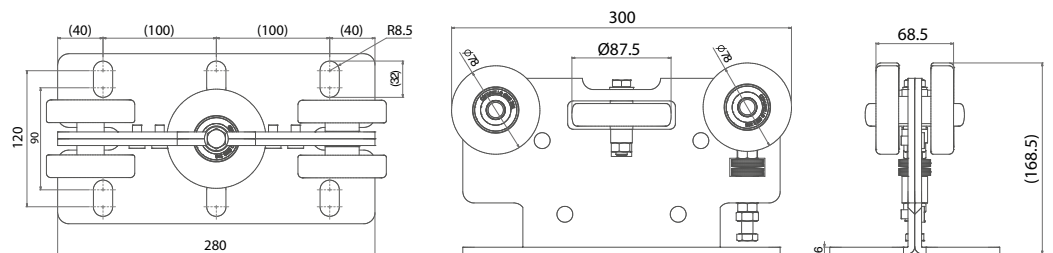


CGS-150.5P

5 wheels cantilever carriage for gates
 Chariot autoportant 5 roues pour portails
 5-rädriger Laufwagen für freitragende Tore
 Carro autoportante 5 ruedas para puertas correderas
 Самонесущая тележка 5 колес для откатных ворот

| CODE | ART. | Size | Box info | |
|--------------|-------------|---------|--------------|-----|
| | | | Pcs per pack | Kg |
| 10130020 001 | CGS-150.5 P | Piccolo | 1 | 5,4 |

Finishing: Galvanized

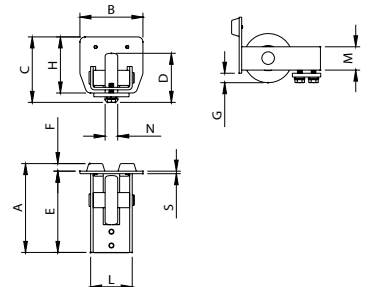


CGS-347P

End wheel for monorail
 Galet d'extrémité pour rail
 Endrad für Einfachschiene
 Rueda terminal para monocarril
 Концевое колесо монорельса

| CODE | ART. | Size | A | B | C | D | E | F | G | H | L | M | N | S | Box info | |
|--------------|----------|---------|-----|-----|-----|------|-----|----|----|----|----|----|----|---|--------------|------|
| | | | | | | | | | | | | | | | Pcs per pack | Kg |
| 10705005 001 | CGS-347P | Piccolo | 141 | 100 | 104 | Ø 78 | 129 | 12 | 15 | 89 | 66 | 37 | 20 | 4 | 2 | 3,40 |

Finishing: Galvanized



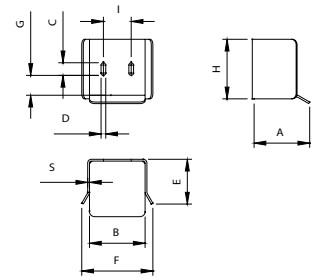
CGS-346P

Bottom end cup to be fixed
 Butée inférieure à fixer
 Unterauflageschuh zum Aufschrauben
 Encuentro inferior para fijar
 Прикрепляемый нижний упор



| CODE | ART. | Size | A | B | C | D | E | F | G | H | I | S | Box info | |
|--------------|----------|---------|-----|-----|----|----|----|-----|----|-----|----|---|--------------|------|
| | | | | | | | | | | | | | Pcs per pack | Kg |
| 10705505 001 | CGS-346P | Piccolo | 119 | 112 | 30 | 11 | 84 | 154 | 33 | 112 | 50 | 4 | 2 | 3,60 |

Finishing: Galvanized



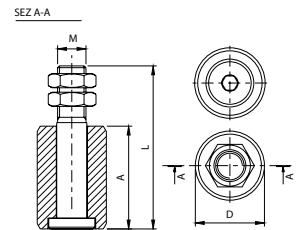
230

Nylon roller
 Rouleau en nylon
 Nylon-Führungsrolle
 Encuentro inferior para fijar
 Прикрепляемый нижний упор



| CODE | ART. | A | B | D | I | H | Box info | |
|--------------|--------|----|-----|----|-----|----|--------------|------|
| | | | | | | | Pcs per pack | Kg |
| 11301010 001 | 230-30 | 40 | Ø30 | 74 | M16 | 24 | 20 | 3,70 |

Finishing: Galvanized



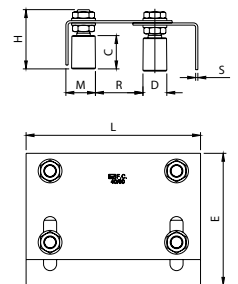
255

Guiding plate for gates with double adjustment
 Platine guide-portail à double réglage
 Torfführungsbügel mit Doppelverstellung
 Placa de guía de la puerta de doble regulación
 Пластина направляющая ворот с двойным регулированием



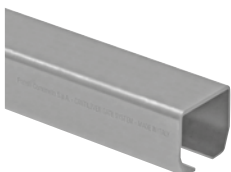
| CODE | ART. | Size | C | D | E | H | L | M | R | S | Box info | |
|--------------|---------|------|----|-----|---------|----|-----|----|-------|---|--------------|-------|
| | | | | | | | | | | | Pcs per pack | Kg |
| 11306005 001 | 255-220 | Ø30 | 40 | Ø30 | 135-175 | 74 | 220 | 38 | 35-62 | 3 | 10 | 22,70 |

Finishing: Galvanized



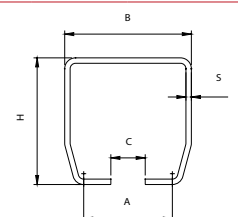
CGS-245P

Monorail for cantilever gates
 Rails pour portails autoportants
 Einfachschiene für selbsttragende Tore
 Monocarril para puertas autoportantes
 Монорельс для самонесущих ворот



| CODE | ART. | Size | A | B | C | H | S | L | Box info | |
|--------------|----------|---------|------|-----|----|----|---|------|--------------|------|
| | | | | | | | | | Pcs per pack | Kg |
| 10207006 001 | CGS-245P | Piccolo | 66,5 | 100 | 33 | 89 | 5 | 3000 | 1 | 35,0 |
| 10207025 001 | CGS-245P | Piccolo | 66,5 | 100 | 33 | 89 | 5 | 6000 | 1 | 70,0 |

Finishing: Galvanized



CANTILEVER GATE

Life made easy

KIT CGA 150-300K

Kit for cantilever gates, in aluminium
 Kit pour portails autoportants aluminium
 Kit Aluminium freitragende Tore
 Kit para puertas autoportantes de aluminio
 Комплект для самонесущих ворот из алюминия

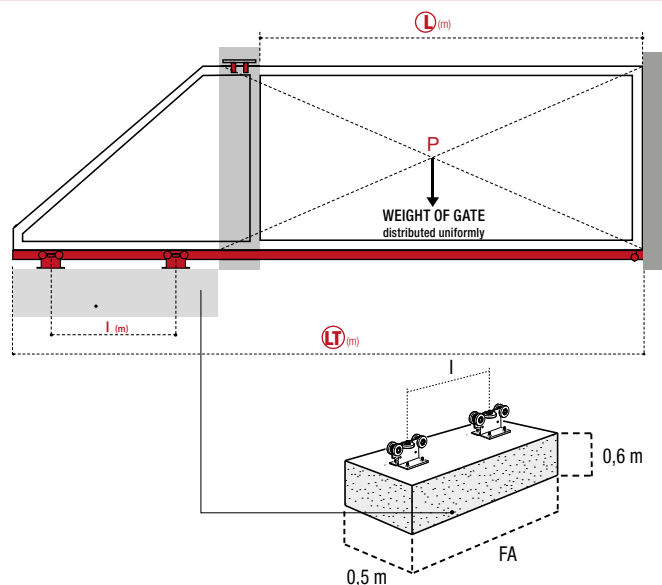


| CODE | ART. | CGA-150.5M | CGA-347M | CGS-346M | CGA-20M |
|----------|------------------------|------------|----------|----------|---------|
| 19912494 | KIT 150-300K ALUMINIUM | 2 Mini | 1 | 1 | 1 |

Minimum dimensions of the reinforced concrete casting
 Dimensions minimums du coulage du ciment armé - Mindestgröße des Stahlbetonguss
 Dimensiones mínimas colada cemento armado
 Минимальные размеры железобетонной стяжки

| CGA 150.5 Mini Capacity = 700 kg | | | | | | |
|----------------------------------|--------|-------|---------|-------|--------|-------|
| P | L=2 m | | L=2,5 m | | L=3 m | |
| | FA (M) | I (M) | FA (M) | I (M) | FA (M) | I (M) |
| 100 | 0,90 | 0,30 | 1,00 | 0,40 | 1,00 | 0,40 |
| 125 | 1,00 | 0,40 | 1,00 | 0,40 | 1,10 | 0,50 |
| 150 | 1,00 | 0,40 | 1,10 | 0,50 | 1,20 | 0,60 |
| 200 | 1,20 | 0,60 | 1,30 | 0,70 | 1,40 | 0,80 |
| 250 | 1,40 | 0,80 | 1,50 | 0,90 | 1,70 | 1,10 |
| 300 | 1,60 | 1,40 | 1,80 | 1,30 | 2,10 | 1,50 |

Nevertheless, it is advisable a minimum wheelbase (I) of about 1/3 of the length (L)
 Cependant, il est conseillé un entraxe minimal (I) de 1/3 de la longueur (L)
 Die empfohlene Strecke (I) 1/3 ist mindestens ein Drittel der Länge (L)
 Se recomienda una distancia mínimo entre ejes (I) de 1/3 de la longitud (L)
 Минимальные размеры железобетонной стяжки



CGA-150.5M

5 wheels cantilever carriage for gates
 Chariot autoportant 5 roues pour portails
 5-rädriger Laufwagen für freitragende Tore
 Carro autoportante 5 ruedas para puertas correderas
 Самонесущая тележка 5 колес для откатных ворот



| CODE | ART. | Size | Box info | |
|--------------|-------------|------|--------------|-----|
| | | | Pcs per pack | Kg |
| 10130630 001 | CGA-150.5 M | Mini | 1 | 3,1 |

Finishing: Galvanized

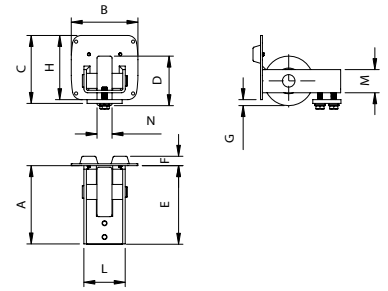
CGA-347M

Nylon end wheel for aluminium monorail
 Galet d'extrémité en nylon pour rail en aluminium
 Nylon-Endrolle für Einfachschiene aus Aluminium
 Rueda terminal de nylon para monocarril de aluminio
 Концевое колесо из нейлона для
 алюминиевого монорельса



| CODE | ART. | Size | A | B | C | D | E | F | G | H | L | M | N | Box info | |
|--------------|----------|------|-----|----|----|-----|-----|----|---|----|----|----|----|--------------|-----|
| | | | | | | | | | | | | | | Pcs per pack | Kg |
| 10705200 001 | CGA-347M | Mini | 119 | 83 | 83 | ∅66 | 119 | 16 | 7 | 79 | 45 | 32 | 15 | 1 | 1,6 |

Finishing: Aluminium



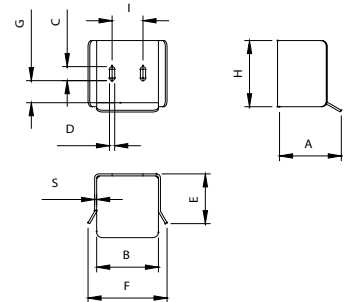
CGS-346M

Bottom end cup to be fixed
 Butée inférieure à fixer
 Unterauflageschuh zum Aufschrauben
 Encuentro inferior para fijar
 Прикрепляемый нижний упор



| CODE | ART. | Size | A | B | C | D | E | F | G | H | I | S | Box info | |
|--------------|----------|------|-----|----|----|---|----|-----|----|----|----|---|--------------|-----|
| | | | | | | | | | | | | | Pcs per pack | Kg |
| 10705501 001 | CGS-346M | Mini | 104 | 78 | 25 | 9 | 75 | 114 | 25 | 91 | 38 | 4 | 1 | 1,8 |

Finishing: Galvanized



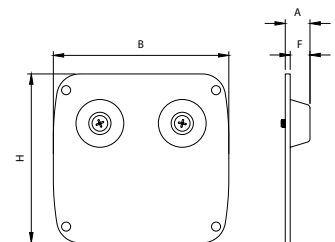
CGA-20M

End stopper for aluminium monorail
 Embout d'extrémité pour rail en aluminium
 Endtropfen für Einfachschiene aus Aluminium
 Terminal para monocarril de aluminio
 Наконечник для алюминиевого монорельса



| CODE | ART. | A | B | F | H | Box info | |
|--------------|---------|----|----|----|----|--------------|-----|
| | | | | | | Pcs per pack | Kg |
| 10707001 001 | CGA-20M | 16 | 83 | 12 | 79 | 1 | 0,3 |

Finishing: Aluminium



Life made easy

KIT CGA 150-600K

Kit for cantilever gates, in aluminium
 Kit pour portails autoportants aluminium
 Kit Aluminium freitragende Tore
 Kit para puertas autoportantes de aluminio
 Комплект для самонесущих ворот из алюминия

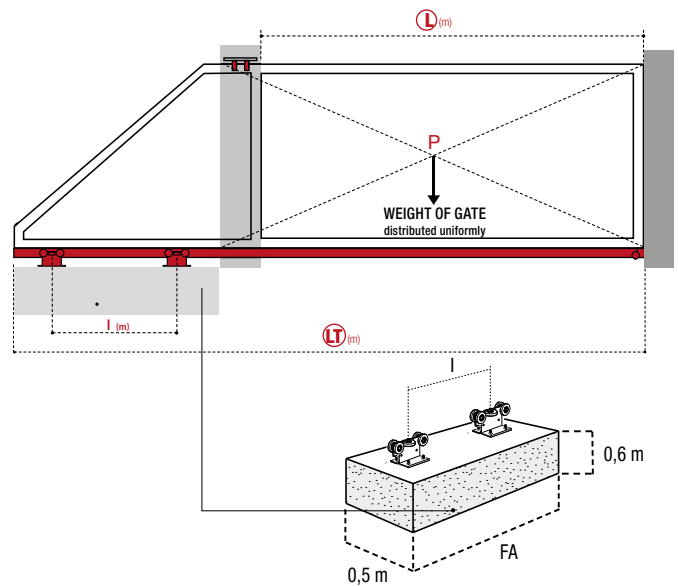


| CODE | ART. | CGA-150.5P AL | CGA-347P | CGS-346P | CGA-20P |
|----------|------------------------|---------------|----------|----------|---------|
| 19912495 | KIT 150-600K ALUMINIUM | 2 Mini | 1 | 1 | 1 |

Minimum dimensions of the reinforced concrete casting
 Dimensions minimums du coulage du ciment armé - Mindestgröße des Stahlbetonguss
 Dimensiones mínimas colada cemento armado
 Минимальные размеры железобетонной стяжки

| CGA 150.5 Piccolo Capacity = 1300 kg | | | | | | |
|--------------------------------------|--------|-------|--------|-------|--------|-------|
| P | L=4 m | | L=5 m | | L=6 m | |
| | FA (M) | I (M) | FA (M) | I (M) | FA (M) | I (M) |
| 350 | 1,8 | 1,1 | 2,1 | 1,4 | 2,4 | 1,7 |
| 400 | 2,0 | 1,3 | 2,3 | 1,6 | 2,7 | 2,0 |
| 450 | 2,2 | 1,5 | 2,6 | 1,9 | 3,1 | 2,4 |
| 500 | 2,5 | 1,8 | 2,3 | 3,0 | 3,5 | 2,8 |
| 550 | 2,8 | 2,1 | 3,3 | 2,6 | 3,9 | 3,2 |
| 600 | 3,2 | 2,5 | 3,8 | 3,1 | 4,5 | 3,8 |

Nevertheless, it is advisable a minimum wheelbase (I) of about 1/3 of the length (L)
 Cependant, il est conseillé un entraxe minimal (I) de 1/3 de la longueur (L)
 Die empfohlene Strecke (I) 1/3 ist mindestens ein Drittel der Länge (L)
 Se recomienda una distancia mínimo entre ejes (I) de 1/3 de la longitud (L)
 Минимальные размеры железобетонной стяжки



CGA-150.5P

5 wheels cantilever carriage for gates
 Chariot autoportant 5 roues pour portails
 5-rädiger Laufwagen für freitragende Tore
 Carro autoportante 5 ruedas para puertas correderas
 Самонесущая тележка 5 колес для откатных ворот



| CODE | ART. | Size | Box info | |
|----------|-------------|------|--------------|-----|
| | | | Pcs per pack | Kg |
| 19912495 | CGA-150.5 P | Mini | 1 | 5,4 |

Finishing: Galvanized

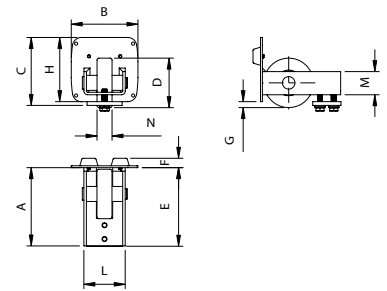
CGA-347P

Nylon end wheel for aluminium monorail
 Galet d'extrémité en nylon pour rail en aluminium
 Nylon-Endrolle für Einfachschiene aus Aluminium
 Rueda terminal de nylon para monocarril de aluminio
 Концевое колесо из нейлона для
 алюминиевого монорельса



| CODE | ART. | Size | A | B | C | D | E | F | G | H | L | M | N | Box info | |
|--------------|----------|---------|-----|-------|-----|------|-----|----|-----|-------|----|----|----|--------------|-----|
| | | | | | | | | | | | | | | Pcs per pack | Kg |
| 10705205 001 | CGA-347P | Piccolo | 140 | 106,5 | 118 | Ø 79 | 125 | 15 | 9,6 | 102,5 | 66 | 37 | 26 | 2 | 3,4 |

Finishing: Aluminium



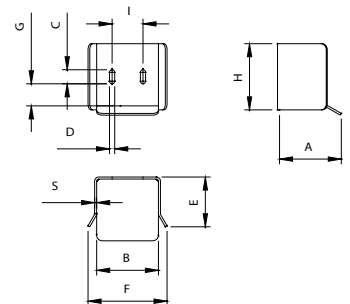
CGS-346P

Bottom end cup to be fixed
 Butée inférieure à fixer
 Unterauflageschuh zum Aufschrauben
 Encuentro inferior para fijar
 Прикрепляемый нижний упор



| CODE | ART. | Size | A | B | C | D | E | F | G | H | I | S | Box info | |
|--------------|----------|---------|-----|-----|----|----|----|-----|----|-----|----|---|--------------|------|
| | | | | | | | | | | | | | Pcs per pack | Kg |
| 10705505 001 | CGS-346P | Piccolo | 119 | 112 | 30 | 11 | 84 | 154 | 33 | 112 | 50 | 4 | 2 | 3,60 |

Finishing: Galvanized



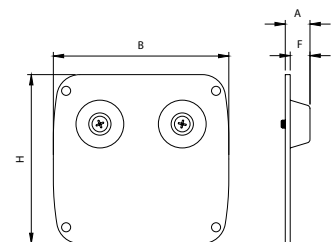
CGA-20P

End stopper for aluminium monorail
 Embout d'extrémité pour rail en aluminium
 Endpfropfen für Einfachschiene aus Aluminium
 Terminal para monocarril de aluminio
 Наконечник для алюминиевого монорельса



| CODE | ART. | A | B | F | H | Box info | |
|--------------|---------|----|-------|----|-------|--------------|------|
| | | | | | | Pcs per pack | Kg |
| 10707005 001 | CGA-20P | 15 | 106,5 | 12 | 102,5 | 2 | 0,60 |

Finishing: Aluminium



CANTILEVER GATE

Life made easy

CGS-250.5 Mini

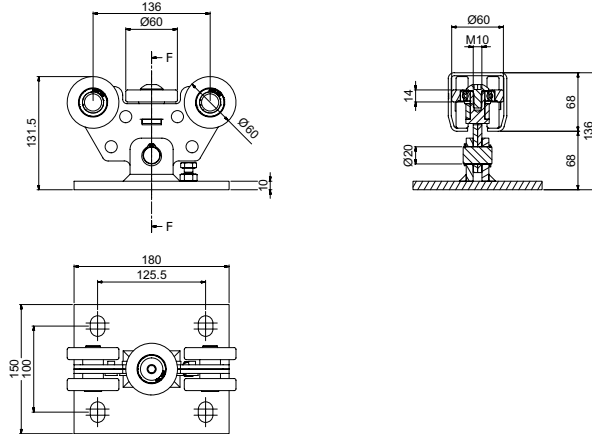
5 wheels cantilever carriage for gates
 Chariot autoportant 5 roues pour portails
 5-rädrieger Laufwagen für freitragende Tore
 Carro autoportante 5 ruedas para puertas correderas
 Самонесущая тележка 5 колес для откатных ворот

FEATURES

- Patented multiplate body
- Noiseless bearings of new generation shielded to protect against dust suitable for temperatures from -30° C to + 80° C
- 4 support wheels for each carriage
- Alignment Central wheel
- Central rotation pin



PATENTED

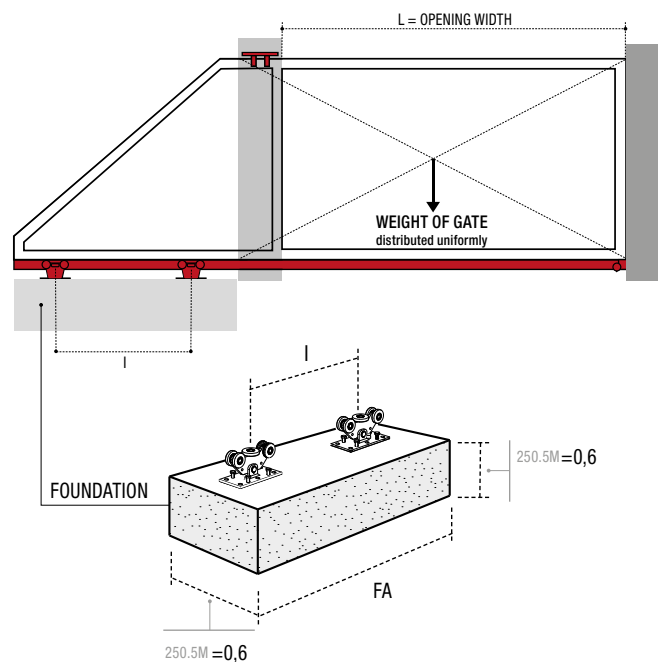


| CODE | ART. | Size | Box info | |
|--------------|-------------|------|--------------|-----|
| | | | Pcs per pack | Kg |
| 10130030 001 | CGS-250.5 M | Mini | 1 | 5,4 |

Finishing: Galvanized

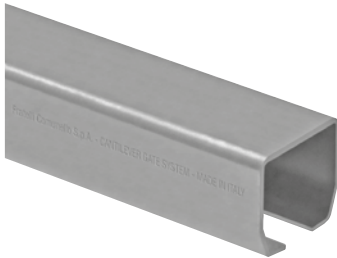
Minimum dimensions of the reinforced concrete casting
 Dimensions minimums du coulage du ciment armé
 Mindestgröße des Stahlbetonguss
 Dimensiones mínimas colada cemento armado
 Минимальные размеры железобетонной стяжки

| CGS 250.5 Mini (F1 max=450 Kg) | | | | | | | | | |
|--------------------------------|--------|-------|---------|-------|--------|-------|---------|-------|--|
| | L=2 m | | L=2,5 m | | L=3 m | | L=3,5 m | | |
| Weight (Kg) | FA (M) | I (M) | FA (M) | I (M) | FA (M) | I (M) | FA (M) | I (M) | |
| 75 | 0,90 | 0,30 | 1,00 | 0,40 | 1,10 | 0,50 | 1,20 | 0,60 | |
| 100 | 1,00 | 0,40 | 1,10 | 0,50 | 1,20 | 0,60 | 1,40 | 0,80 | |
| 125 | 1,20 | 0,60 | 1,30 | 0,70 | 1,40 | 0,80 | 1,60 | 1,00 | |
| 150 | 1,30 | 0,70 | 1,50 | 0,90 | 1,70 | 1,10 | 1,90 | 1,30 | |

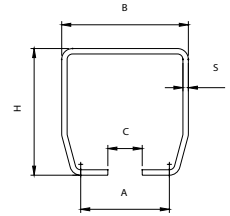


CGS-245M

Monorail for cantilever gates
 Rails pour portails autoportants
 Einfachschiene für selbsttragende Tore
 Monocarril para puertas autoportantes
 Монорельс для самонесущих ворот



| CODE | ART. | Size | Finishing | A | B | C | H | S | L | Box info | |
|--------------|----------|------|-----------|----|----|----|----|-----|------|--------------|------|
| | | | | | | | | | | Pcs per pack | Kg |
| 10207004 | CGS-245M | Mini | Raw | 48 | 68 | 23 | 68 | 3,5 | 3000 | 1 | 18,3 |
| 10207024 | CGS-245M | Mini | Raw | 48 | 68 | 23 | 68 | 3,5 | 6000 | 1 | 36,5 |
| 10207004 001 | CGS-245M | Mini | Zinc | 48 | 68 | 23 | 68 | 3,5 | 3000 | 1 | 18,3 |
| 10207024 001 | CGS-245M | Mini | Zinc | 48 | 68 | 23 | 68 | 3,5 | 6000 | 1 | 36,5 |



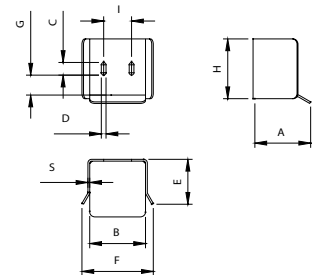
CGS-346M

Bottom end cup to be fixed
 Butée inférieure à fixer
 Unterauflageschuh zum Aufschrauben
 Encuentro inferior para fijar
 Прикрепляемый нижний упор



| CODE | ART. | Size | A | B | C | D | E | F | G | H | I | S | Box info | |
|--------------|----------|------|-----|----|----|---|----|-----|----|----|----|---|--------------|-----|
| | | | | | | | | | | | | | Pcs per pack | Kg |
| 10705501 001 | CGS-346M | Mini | 104 | 78 | 25 | 9 | 75 | 114 | 25 | 91 | 38 | 4 | 2 | 2,3 |

Finishing: Galvanized



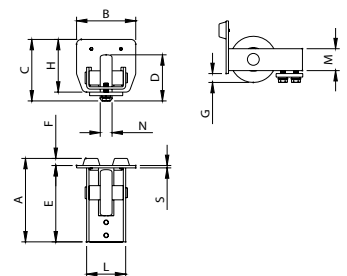
CGS-347M

End wheel for monorail
 Galet d'extrémité pour rail
 Endrad für Einfachschiene
 Rueda terminal para monocarril
 Концевое колесо монорельса



| CODE | ART. | Size | A | B | C | D | E | F | G | H | L | M | N | S | Box info | |
|--------------|----------|------|-----|----|------|-----|-----|----|------|----|----|----|----|---|--------------|-----|
| | | | | | | | | | | | | | | | Pcs per pack | Kg |
| 10705001 001 | CGS-347M | Mini | 135 | 68 | 82,5 | Ø68 | 123 | 12 | 14,5 | 68 | 45 | 32 | 15 | 4 | 2 | 2,0 |

Finishing: Galvanized



CANTILEVER GATE

Life made easy

CGS-250.5 Piccolo

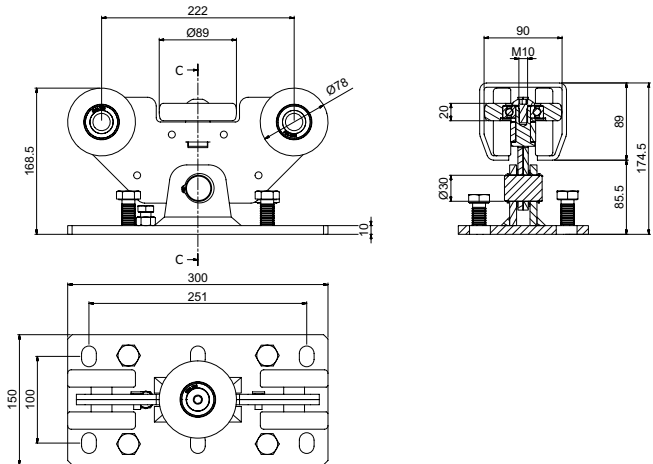
5 wheels cantilever carriage for gates
 Chariot autoportant 5 roues pour portails
 5-rädriiger Laufwagen für freitragende Tore
 Carro autoportante 5 ruedas para puertas correderas
 Самонесущая тележка 5 колес для откатных ворот

FEATURES

- Patented multiplate body
- Noiseless bearings of new generation shielded to protect against dust suitable for temperatures from -30° C to + 80° C
- 4 support wheels for each carriage
- Alignment Central wheel
- Central rotation pin



PATENTED

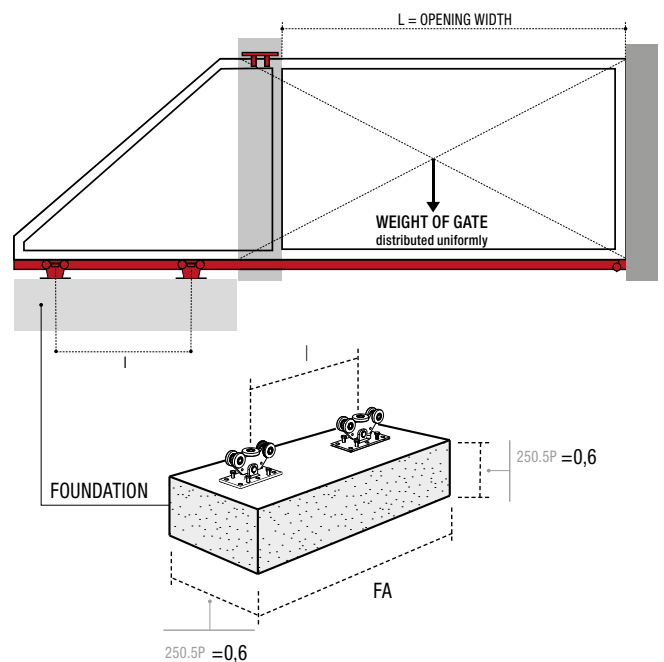


| CODE | ART. | Size | Box info | |
|--------------|-------------|---------|--------------|------|
| | | | Pcs per pack | Kg |
| 10130031 001 | CGS-250.5 P | Piccolo | 1 | 10,6 |

Finishing: Galvanized

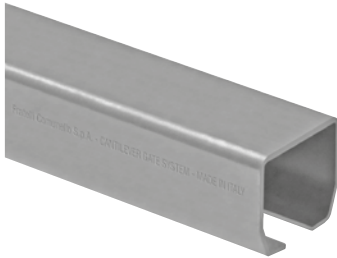
Minimum dimensions of the reinforced concrete casting
 Dimensions minimums du coulage du ciment armé
 Mindestgröße des Stahlbetonguss
 Dimensiones mínimas colada cemento armado
 Минимальные размеры железобетонной стяжки

| CGS 250.5 Piccolo (F1max=750 Kg) | | | | | | | | | | |
|----------------------------------|---------|-------|--------|-------|---------|-------|--------|-------|---------|-------|
| | L=2,5 m | | L=3 m | | L=3,5 m | | L=4 m | | L=4,5 m | |
| Weight (Kg) | FA (M) | I (M) | FA (M) | I (M) | FA (M) | I (M) | FA (M) | I (M) | FA (M) | I (M) |
| 150 | 1,20 | 0,50 | 1,30 | 0,60 | 1,40 | 0,70 | 1,60 | 0,90 | 1,70 | 1,00 |
| 175 | 1,30 | 0,60 | 1,40 | 0,70 | 1,60 | 0,90 | 1,70 | 1,00 | 1,90 | 1,20 |
| 200 | 1,40 | 0,70 | 1,60 | 0,90 | 1,70 | 1,00 | 1,90 | 1,20 | 2,10 | 1,40 |
| 225 | 1,50 | 0,80 | 1,70 | 1,00 | 1,90 | 1,20 | 2,10 | 1,40 | 2,30 | 1,60 |
| 250 | 1,70 | 1,00 | 1,90 | 1,20 | 2,10 | 1,40 | 2,30 | 1,60 | 2,50 | 1,80 |

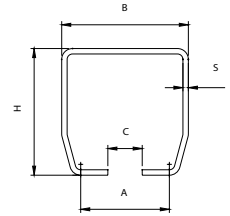


CGS-245P

Monorail for cantilever gates
 Rails pour portails autoportants
 Einfachschiene für selbsttragende Tore
 Monocarril para puertas autoportantes
 Монорельс для самонесущих ворот



| CODE | ART. | Size | Finishing | A | B | C | H | S | L | Box info | |
|--------------|----------|---------|-----------|------|-----|----|----|---|------|--------------|------|
| | | | | | | | | | | Pcs per pack | Kg |
| 10207006 | CGS-245P | Piccolo | Raw | 66,5 | 100 | 33 | 89 | 5 | 3000 | 1 | 35,0 |
| 10207025 | CGS-245P | Piccolo | Raw | 66,5 | 100 | 33 | 89 | 5 | 6000 | 1 | 70,0 |
| 10207006 001 | CGS-245P | Piccolo | Zinc | 66,5 | 100 | 33 | 89 | 5 | 3000 | 1 | 35,0 |
| 10207025 001 | CGS-245P | Piccolo | Zinc | 66,5 | 100 | 33 | 89 | 5 | 6000 | 1 | 70,0 |

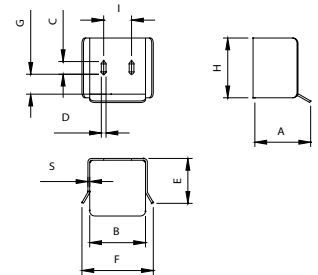


CGS-346P

Bottom end cup to be fixed
 Butée inférieure à fixer
 Unterauflageschuh zum Aufschrauben
 Encuentro inferior para fijar
 Прикрепляемый нижний упор



| CODE | ART. | Size | A | B | C | D | E | F | G | H | I | S | Box info | |
|---------------------------|----------|---------|-----|-----|----|----|----|-----|----|-----|----|---|--------------|-----|
| | | | | | | | | | | | | | Pcs per pack | Kg |
| 10705505 001 | CGS-346P | Piccolo | 119 | 112 | 30 | 11 | 84 | 154 | 33 | 112 | 50 | 4 | 2 | 3,6 |
| Finishing: Galvanized | | | | | | | | | | | | | | |
| 10706005 | CGI-346P | Piccolo | 119 | 112 | 30 | 11 | 84 | 154 | 33 | 112 | 50 | 4 | 2 | 3,6 |
| Finitura: Stainless steel | | | | | | | | | | | | | | |

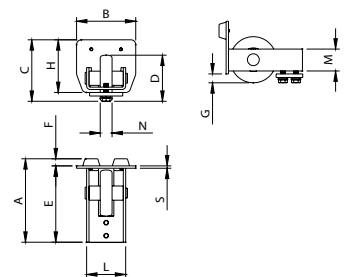


CGS-347P

End wheel for monorail
 Galet d'extrémité pour rail
 Endrad für Einfachschiene
 Rueda terminal para monocarril
 Концевое колесо монорельса



| CODE | ART. | Size | A | B | C | D | E | F | G | H | L | M | N | S | Box info | |
|---------------------------|----------|---------|-----|-----|-----|-----|-----|----|----|----|----|----|----|---|--------------|-----|
| | | | | | | | | | | | | | | | Pcs per pack | Kg |
| 10705005 001 | CGS-347P | Piccolo | 141 | 100 | 104 | Ø78 | 129 | 12 | 15 | 89 | 66 | 37 | 20 | 4 | 2 | 3,4 |
| Finishing: Galvanized | | | | | | | | | | | | | | | | |
| 10705305 | CGI-347P | Piccolo | 141 | 100 | 104 | Ø78 | 129 | 12 | 15 | 89 | 66 | 37 | 20 | 4 | 2 | 3,4 |
| Finitura: Stainless steel | | | | | | | | | | | | | | | | |



CANTILEVER GATE

Life made easy

CGS-250.5 Grande

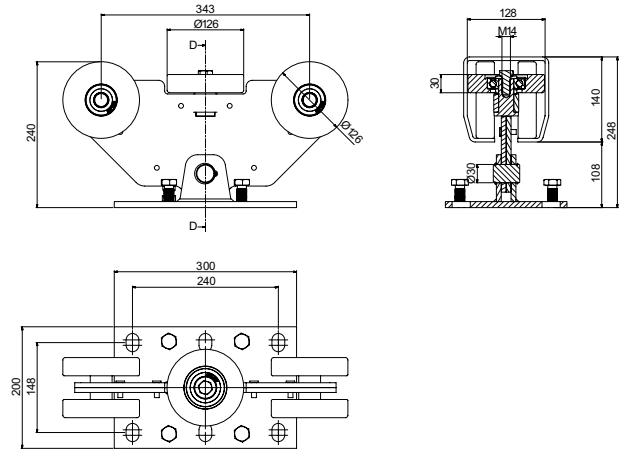
5 wheels cantilever carriage for gates
 Chariot autoportant 5 roues pour portails
 5-rädrieger Laufwagen für freitragende Tore
 Carro autoportante 5 ruedas para puertas correderas
 Самонесущая тележка 5 колес для откатных ворот

FEATURES

- Patented multiplate body
- Noiseless bearings of new generation shielded to protect against dust suitable for temperatures from -30° C to + 80° C
- 4 support wheels for each carriage
- Alignment Central wheel
- Central rotation pin



PATENTED

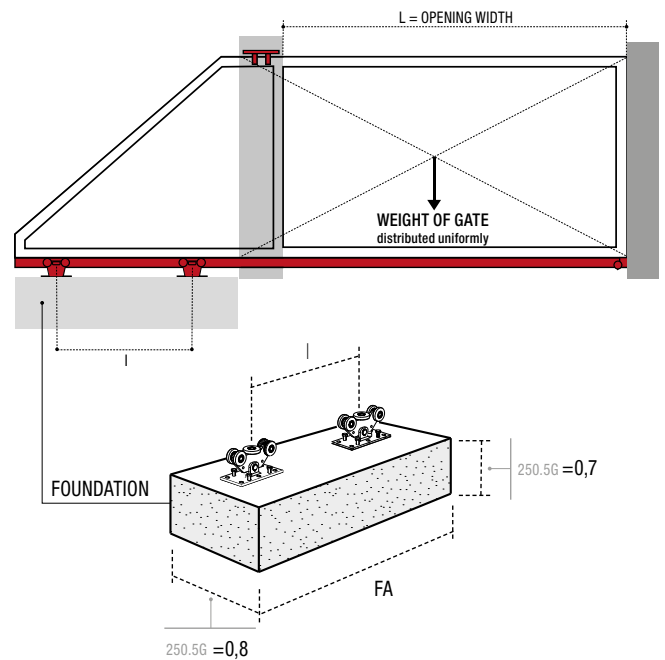


| CODE | ART. | Size | Box info | |
|--------------|-------------|--------|--------------|------|
| | | | Pcs per pack | Kg |
| 10130032 001 | CGS-250.5 G | Grande | 1 | 26,6 |

Finishing: Galvanized

Minimum dimensions of the reinforced concrete casting
 Dimensions minimums du coulage du ciment armé
 Mindestgröße des Stahlbetonguss
 Dimensiones mínimas colada cemento armado
 Минимальные размеры железобетонной стяжки

| CGS 250.5 Grande (F1max=1400 Kg) | | | | | | | | | | |
|----------------------------------|--------|-------|---------|-------|--------|-------|---------|-------|--------|-------|
| | L=5 m | | L=5,5 m | | L=6 m | | L=6,5 m | | L=7 m | |
| Weight (Kg) | FA (M) | I (M) | FA (M) | I (M) | FA (M) | I (M) | FA (M) | I (M) | FA (M) | I (M) |
| 300 | 2,20 | 1,30 | 2,40 | 1,50 | 2,60 | 1,70 | 2,70 | 1,80 | 2,90 | 2,00 |
| 350 | 2,50 | 1,60 | 2,70 | 1,80 | 2,90 | 2,00 | 3,10 | 2,20 | 3,30 | 2,40 |
| 400 | 2,70 | 1,80 | 3,00 | 2,10 | 3,20 | 2,30 | 3,50 | 2,60 | 3,70 | 2,80 |
| 450 | 3,10 | 2,20 | 3,30 | 2,40 | 3,60 | 2,70 | 3,90 | 3,00 | 4,20 | 3,30 |

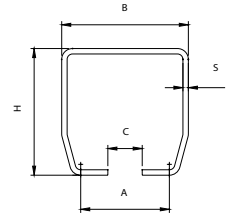


CGS-245G

Monorail for cantilever gates
 Rails pour portails autoportants
 Einfachschiene für selbsttragende Tore
 Monocarril para puertas autoportantes
 Монорельс для самонесущих ворот



| CODE | ART. | Size | Finishing | A | B | C | H | S | L | Box info | |
|--------------|----------|--------|-----------|----|-----|----|-----|---|------|--------------|-------|
| | | | | | | | | | | Pcs per pack | Kg |
| 10207014 | CGS-245G | Grande | Raw | 98 | 140 | 38 | 140 | 6 | 3000 | 1 | 67,0 |
| 10207026 | CGS-245G | Grande | Raw | 98 | 140 | 38 | 140 | 6 | 6000 | 1 | 134,0 |
| 10207014 001 | CGS-245G | Grande | Zinc | 98 | 140 | 38 | 140 | 6 | 3000 | 1 | 67,0 |
| 10207026 001 | CGS-245G | Grande | Zinc | 98 | 140 | 38 | 140 | 6 | 6000 | 1 | 134,0 |



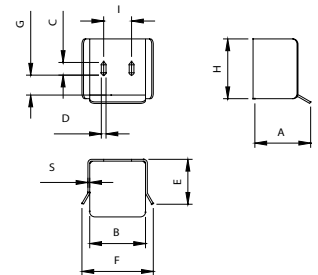
CGS-346G

Bottom end cup to be fixed
 Butée inférieure à fixer
 Unterauflageschuh zum Aufschrauben
 Encuentro inferior para fijar
 Прикрепляемый нижний упор



| CODE | ART. | Size | A | B | C | D | E | F | G | H | I | S | Box info | |
|--------------|----------|--------|-----|-----|----|----|-----|-----|----|-----|----|---|--------------|-----|
| | | | | | | | | | | | | | Pcs per pack | Kg |
| 10705510 001 | CGS-346G | Grande | 159 | 154 | 35 | 13 | 120 | 197 | 55 | 165 | 77 | 5 | 2 | 7,6 |

Finishing: Galvanized



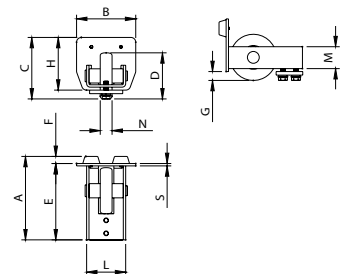
CGS-347G

End wheel for monorail
 Galet d'extrémité pour rail
 Endrad für Einfachschiene
 Rueda terminal para monocarril
 Концевое колесо монорельса



| CODE | ART. | Size | A | B | C | D | E | F | G | H | L | M | N | S | Box info | |
|--------------|----------|--------|-----|-----|-----|-----|-----|------|----|-----|----|----|----|---|--------------|-----|
| | | | | | | | | | | | | | | | Pcs per pack | Kg |
| 10705010 001 | CGS-347G | Grande | 195 | 140 | 155 | Ø98 | 170 | 24,5 | 15 | 140 | 95 | 56 | 30 | 5 | 2 | 8,3 |

Finishing: Galvanized



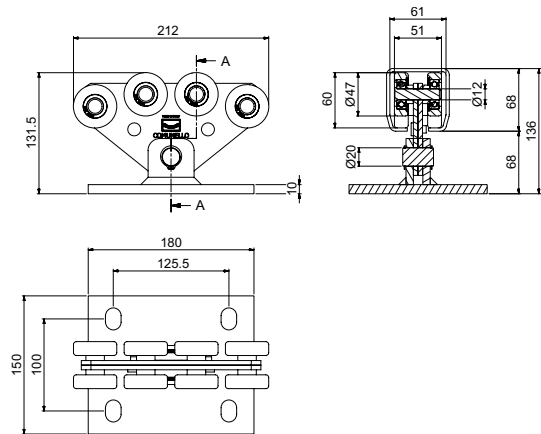
Life made easy

CGS-250.8 Mini

8 wheels cantilever carriage for gates
 Chariot autoportant 8 roues pour portails
 8-rädriger Laufwagen für freitragende Tore
 Carro autoportante 8 ruedas para puertas correderas
 Самонесущая тележка 8 колес для откатных ворот

FEATURES

- Patented multiplate body
- Noiseless bearings of new generation shielded to protect against dust suitable for temperatures from -30° C to + 80° C
- Self-balancing
- 8 support wheels for each carriage
- Longitudinal alignment on 16 wheels
- Central rotation stiffened pin

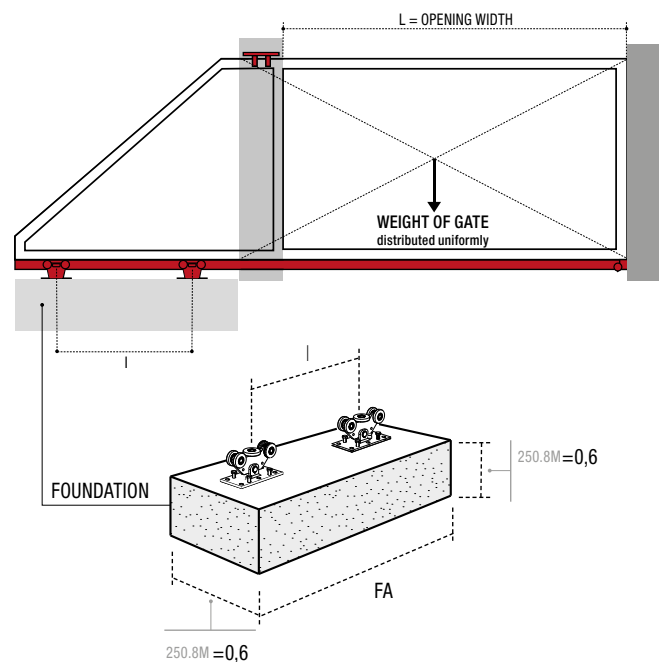


| CODE | ART. | Size | Box info | |
|--------------|-------------|------|--------------|-----|
| | | | Pcs per pack | Kg |
| 10130003 001 | CGS-250.8 M | Mini | 1 | 5,0 |

Finishing: Galvanized

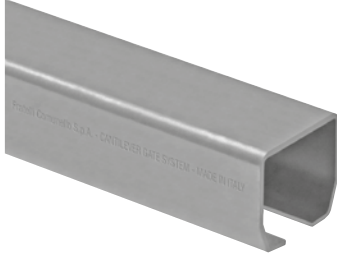
Minimum dimensions of the reinforced concrete casting
 Dimensions minimums du coulage du ciment armé
 Mindestgröße des Stahlbetonguss
 Dimensiones mínimas colada cemento armado
 Минимальные размеры железобетонной стяжки

| CGS 250.8 Mini (F1max=950 Kg) | | | | | | | | | |
|-------------------------------|--------|-------|---------|-------|--------|-------|---------|-------|--|
| | L=2 m | | L=2,5 m | | L=3 m | | L=3,5 m | | |
| Weight (Kg) | FA (M) | I (M) | FA (M) | I (M) | FA (M) | I (M) | FA (M) | I (M) | |
| 200 | 1,10 | 0,50 | 1,20 | 0,60 | 1,30 | 0,70 | 1,50 | 0,90 | |
| 250 | 1,30 | 0,70 | 1,40 | 0,80 | 1,50 | 0,90 | 1,80 | 1,20 | |
| 300 | 1,50 | 0,90 | 1,60 | 1,00 | 1,80 | 1,20 | 2,10 | 1,50 | |
| 350 | 1,70 | 1,10 | 1,90 | 1,30 | 2,10 | 1,50 | 2,50 | 1,90 | |

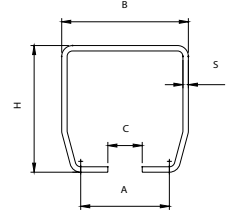


CGS-245M

Monorail for cantilever gates
 Rails pour portails autoportants
 Einfachschiene für selbsttragende Tore
 Monocarril para puertas autoportantes
 Монорельс для самонесущих ворот



| CODE | ART. | Size | Finishing | A | B | C | H | S | L | Box info | |
|--------------|----------|------|-----------|----|----|----|----|-----|------|--------------|------|
| | | | | | | | | | | Pcs per pack | Kg |
| 10207004 | CGS-245M | Mini | Raw | 48 | 68 | 23 | 68 | 3,5 | 3000 | 1 | 18,3 |
| 10207024 | CGS-245M | Mini | Raw | 48 | 68 | 23 | 68 | 3,5 | 6000 | 1 | 36,5 |
| 10207004 001 | CGS-245M | Mini | Zinc | 48 | 68 | 23 | 68 | 3,5 | 3000 | 1 | 18,3 |
| 10207024 001 | CGS-245M | Mini | Zinc | 48 | 68 | 23 | 68 | 3,5 | 6000 | 1 | 36,5 |



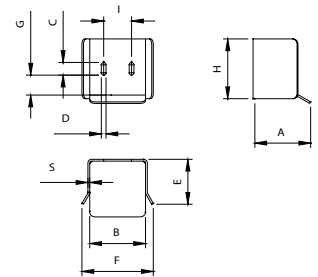
CGS-346M

Bottom end cup to be fixed
 Butée inférieure à fixer
 Unterauflageschuh zum Aufschrauben
 Encuentro inferior para fijar
 Прикрепляемый нижний упор



| CODE | ART. | Size | A | B | C | D | E | F | G | H | I | S | Box info | |
|--------------|----------|------|-----|----|----|---|----|-----|----|----|----|---|--------------|-----|
| | | | | | | | | | | | | | Pcs per pack | Kg |
| 10705501 001 | CGS-346M | Mini | 104 | 78 | 25 | 9 | 75 | 114 | 25 | 91 | 38 | 4 | 2 | 2,3 |

Finishing: Galvanized



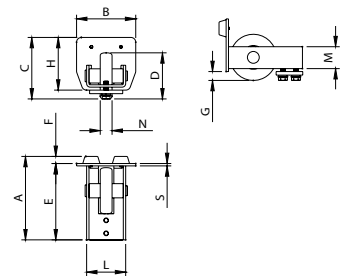
CGS-347M

End wheel for monorail
 Galet d'extrémité pour rail
 Endrad für Einfachschiene
 Rueda terminal para monocarril
 Концевое колесо монорельса



| CODE | ART. | Size | A | B | C | D | E | F | G | H | L | M | N | S | Box info | |
|--------------|----------|------|-----|----|------|-----|-----|----|------|----|----|----|----|---|--------------|-----|
| | | | | | | | | | | | | | | | Pcs per pack | Kg |
| 10705001 001 | CGS-347M | Mini | 135 | 68 | 82,5 | Ø68 | 123 | 12 | 14,5 | 68 | 45 | 32 | 15 | 4 | 2 | 2,0 |

Finishing: Galvanized



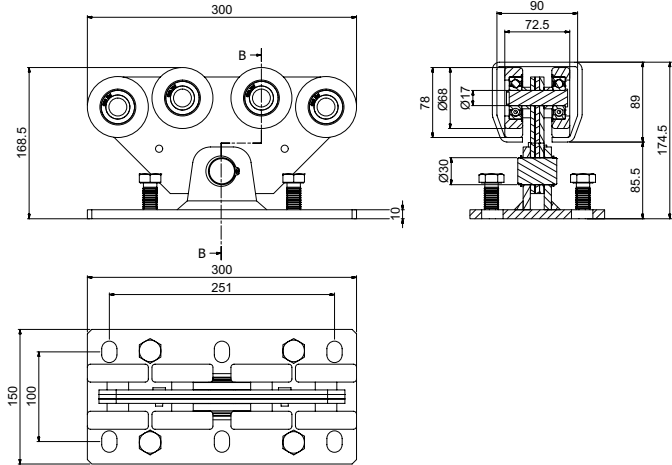
Life made easy

CGS-250.8 Piccolo

8 wheels cantilever carriage for gates
 Chariot autoportant 8 roues pour portails
 8-rädriger Laufwagen für freitragende Tore
 Carro autoportante 8 ruedas para puertas correderas
 Самонесущая тележка 8 колес для откатных ворот

FEATURES

- Patented multiplate body
- Noiseless bearings of new generation shielded to protect against dust suitable for temperatures from -30° C to + 80° C
- Self-balancing
- 8 support wheels for each carriage
- Longitudinal alignment on 16 wheels
- Central rotation stiffened pin

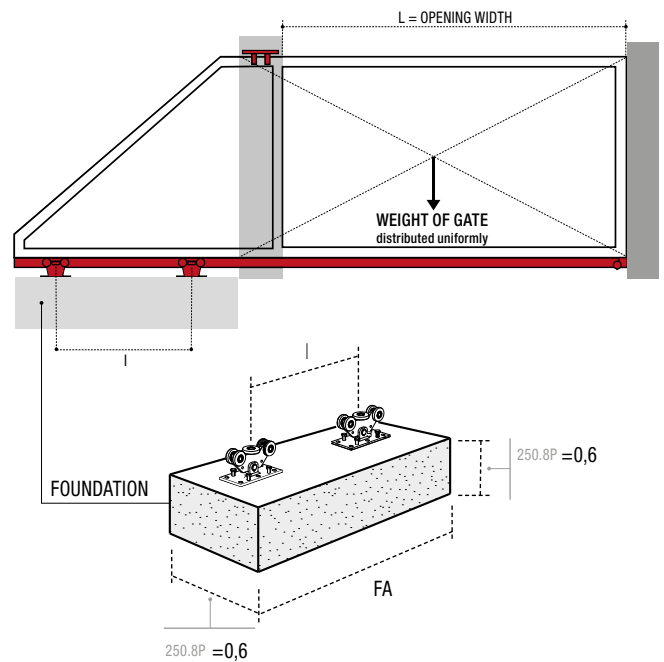


| CODE | ART. | Size | Box info | |
|--------------|-------------|---------|--------------|------|
| | | | Pcs per pack | Kg |
| 10130007 001 | CGS-250.8 P | Piccolo | 1 | 10,6 |

Finishing: Galvanized

Dimensioni minime getto cemento armato
 Minimum dimensions of the reinforced concrete casting
 Dimensions minimums du coulage du ciment armé
 Mindestgröße des Stahlbetonguss
 Dimensiones mínimas colada cemento armado
 Минимальные размеры железобетонной стяжки

| CGS 250.8 Piccolo (F1 max=1550 Kg) | | | | | | | | | | |
|------------------------------------|---------|-------|--------|-------|---------|-------|--------|-------|---------|-------|
| | L=2,5 m | | L=3 m | | L=3,5 m | | L=4 m | | L=4,5 m | |
| Weight (Kg) | FA (M) | I (M) | FA (M) | I (M) | FA (M) | I (M) | FA (M) | I (M) | FA (M) | I (M) |
| 400 | 1,40 | 0,70 | 1,50 | 0,90 | 1,70 | 1,00 | 1,80 | 1,10 | 1,90 | 1,20 |
| 450 | 1,60 | 0,90 | 1,70 | 1,00 | 1,80 | 1,10 | 2,00 | 1,30 | 2,10 | 1,40 |
| 500 | 1,70 | 1,00 | 1,80 | 1,20 | 2,00 | 1,30 | 2,20 | 1,50 | 2,30 | 1,60 |
| 550 | 1,80 | 1,10 | 2,00 | 1,30 | 2,20 | 1,50 | 2,40 | 1,70 | 2,60 | 1,90 |
| 600 | 2,00 | 1,30 | 2,20 | 1,50 | 2,40 | 1,70 | 2,60 | 1,90 | 2,90 | 2,20 |

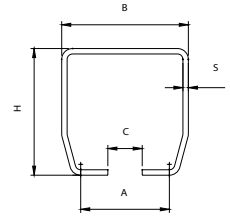


CGS-245P

Monorail for cantilever gates
 Rails pour portails autoportants
 Einfachschiene für selbsttragende Tore
 Monocarril para puertas autoportantes
 Монорельс для самонесущих ворот



| CODE | ART. | Size | Finishing | A | B | C | H | S | L | Box info | |
|--------------|----------|---------|-----------|------|-----|----|----|---|------|--------------|------|
| | | | | | | | | | | Pcs per pack | Kg |
| 10207006 | CGS-245P | Piccolo | Raw | 66,5 | 100 | 33 | 89 | 5 | 3000 | 1 | 35,0 |
| 10207025 | CGS-245P | Piccolo | Raw | 66,5 | 100 | 33 | 89 | 5 | 6000 | 1 | 70,0 |
| 10207006 001 | CGS-245P | Piccolo | Zinc | 66,5 | 100 | 33 | 89 | 5 | 3000 | 1 | 35,0 |
| 10207025 001 | CGS-245P | Piccolo | Zinc | 66,5 | 100 | 33 | 89 | 5 | 6000 | 1 | 70,0 |

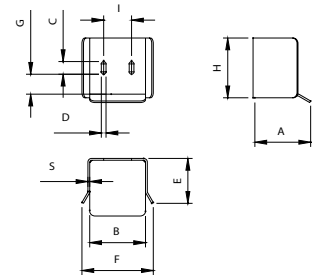


CGS-346P

Bottom end cup to be fixed
 Butée inférieure à fixer
 Unterauflageschuh zum Aufschrauben
 Encuentro inferior para fijar
 Прикрепляемый нижний упор



| CODE | ART. | Size | A | B | C | D | E | F | G | H | I | S | Box info | |
|-----------------------------------|----------|---------|-----|-----|----|----|----|-----|----|-----|----|---|--------------|-----|
| | | | | | | | | | | | | | Pcs per pack | Kg |
| 10705505 001 | CGS-346P | Piccolo | 119 | 112 | 30 | 11 | 84 | 154 | 33 | 112 | 50 | 4 | 2 | 3,6 |
| Finishing: Galvanized | | | | | | | | | | | | | | |
| 10706005 | CGI-346P | Piccolo | 119 | 112 | 30 | 11 | 84 | 154 | 33 | 112 | 50 | 4 | 2 | 3,6 |
| Finishing: Stainless steel | | | | | | | | | | | | | | |

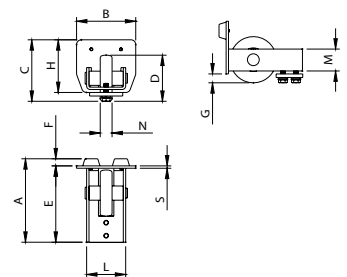


CGS-347P

End wheel for monorail
 Galet d'extrémité pour rail
 Endrad für Einfachschiene
 Rueda terminal para monocarril
 Концевое колесо монорельса



| CODE | ART. | Size | A | B | C | D | E | F | G | H | L | M | N | S | Box info | |
|-----------------------------------|----------|---------|-----|-----|-----|-----|-----|----|----|----|----|----|----|---|--------------|-----|
| | | | | | | | | | | | | | | | Pcs per pack | Kg |
| 10705005 001 | CGS-347P | Piccolo | 141 | 100 | 104 | Ø78 | 129 | 12 | 15 | 89 | 66 | 37 | 20 | 4 | 2 | 3,4 |
| Finishing: Galvanized | | | | | | | | | | | | | | | | |
| 10705305 | CGI-347P | Piccolo | 141 | 100 | 104 | Ø78 | 129 | 12 | 15 | 89 | 66 | 37 | 20 | 4 | 2 | 3,4 |
| Finishing: Stainless steel | | | | | | | | | | | | | | | | |



CANTILEVER GATE

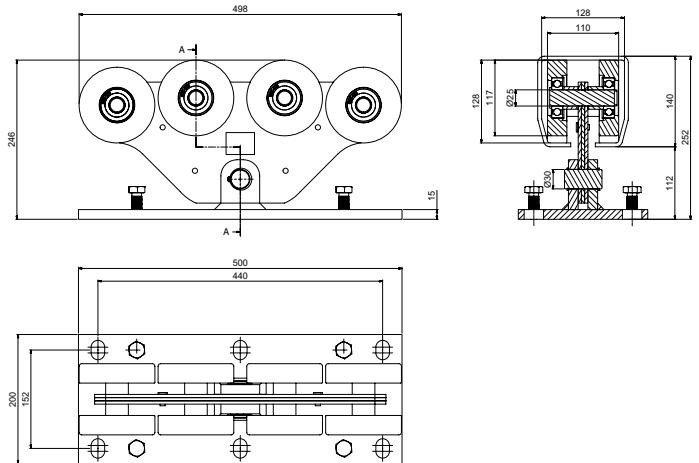
Life made easy

CGS-250.8 Grande

8 wheels cantilever carriage for gates
 Chariot autoportant 8 roues pour portails
 8-rädriger Laufwagen für freitragende Tore
 Carro autoportante 8 ruedas para puertas correderas
 Самонесущая тележка 8 колес для откатных ворот

FEATURES

- Patented multiplate body
- Noiseless bearings of new generation shielded to protect against dust suitable for temperatures from -30° C to + 80° C
- Self-balancing
- 8 support wheels for each carriage
- Longitudinal alignment on 16 wheels
- Central rotation stiffened pin

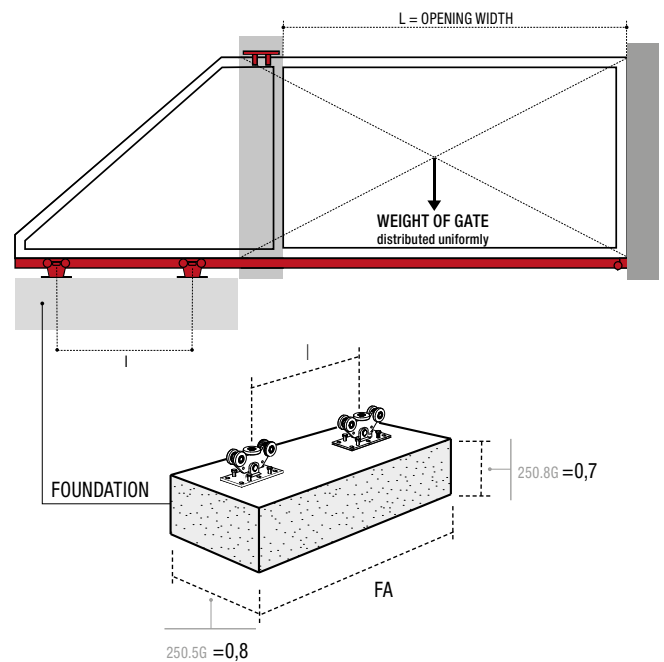


| CODE | ART. | Size | Box info | |
|--------------|-------------|--------|--------------|------|
| | | | Pcs per pack | Kg |
| 10130012 001 | CGS-250.8 G | Grande | 1 | 26,6 |

Finishing: Galvanized

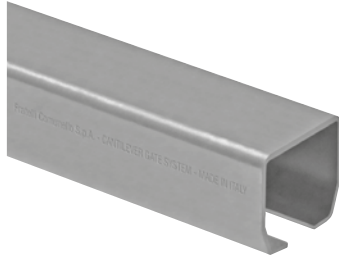
Minimum dimensions of the reinforced concrete casting
 Dimensions minimums du coulage du ciment armé
 Mindestgröße des Stahlbetonguss
 Dimensiones mínimas colada cemento armado
 Минимальные размеры железобетонной стяжки

| CGS 250.8 Grande (F1max=2500 Kg) | | | | | | | | | | |
|----------------------------------|--------|-------|---------|-------|--------|-------|---------|-------|--------|-------|
| | L=5 m | | L=5,5 m | | L=6 m | | L=6,5 m | | L=7 m | |
| Weight (Kg) | FA (M) | I (M) | FA (M) | I (M) | FA (M) | I (M) | FA (M) | I (M) | FA (M) | I (M) |
| 500 | 1,90 | 1,00 | 2,00 | 1,10 | 2,10 | 1,20 | 2,30 | 1,40 | 2,40 | 1,50 |
| 550 | 2,00 | 1,10 | 2,10 | 1,20 | 2,30 | 1,40 | 2,40 | 1,50 | 2,50 | 1,60 |
| 600 | 2,10 | 1,20 | 2,30 | 1,40 | 2,40 | 1,50 | 2,60 | 1,70 | 2,70 | 1,80 |
| 650 | 2,30 | 1,40 | 2,40 | 1,50 | 2,60 | 1,70 | 2,70 | 1,80 | 2,90 | 2,00 |

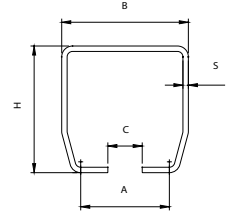


CGS-245G

Monorail for cantilever gates
 Rails pour portails autoportants
 Einfachschiene für selbsttragende Tore
 Monocarril para puertas autoportantes
 Монорельс для самонесущих ворот



| CODE | ART. | Size | Finishing | A | B | C | H | S | L | Box info | |
|--------------|----------|--------|-----------|----|-----|----|-----|---|------|--------------|-------|
| | | | | | | | | | | Pcs per pack | Kg |
| 10207006 | CGS-245P | Grande | Raw | 98 | 140 | 38 | 140 | 6 | 3000 | 1 | 67,0 |
| 10207025 | CGS-245P | Grande | Raw | 98 | 140 | 38 | 140 | 6 | 6000 | 1 | 134,0 |
| 10207006 001 | CGS-245P | Grande | Zinc | 98 | 140 | 38 | 140 | 6 | 3000 | 1 | 67,0 |
| 10207023 001 | CGS-245P | Grande | Zinc | 98 | 140 | 38 | 140 | 6 | 6000 | 1 | 134,0 |



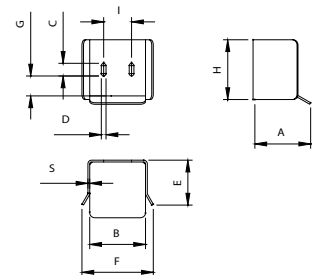
CGS-346G

Bottom end cup to be fixed
 Butée inférieure à fixer
 Unterauflegesoh zum Aufschrauben
 Encuentro inferior para fijar
 Прикрепляемый нижний упор



| CODE | ART. | Size | A | B | C | D | E | F | G | H | I | S | Box info | |
|--------------|----------|--------|-----|-----|----|----|-----|-----|----|-----|----|---|--------------|-----|
| | | | | | | | | | | | | | Pcs per pack | Kg |
| 10705510 001 | CGS-346G | Grande | 159 | 154 | 35 | 13 | 120 | 197 | 55 | 165 | 77 | 5 | 2 | 7,6 |

Finishing: Galvanized



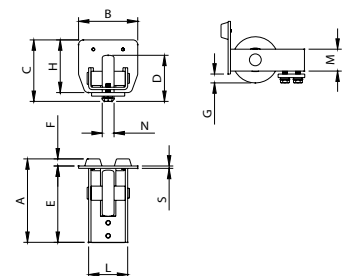
CGS-347G

End wheel for monorail
 Galet d'extrémité pour rail
 Endrad für Einfachschiene
 Rueda terminal para monocarril
 Концевое колесо монорельса



| CODE | ART. | Size | A | B | C | D | E | F | G | H | L | M | N | S | Box info | |
|--------------|----------|--------|-----|-----|-----|-----|-----|------|----|-----|----|----|----|---|--------------|-----|
| | | | | | | | | | | | | | | | Pcs per pack | Kg |
| 10705010 001 | CGS-347G | Grande | 195 | 140 | 155 | Ø98 | 170 | 24,5 | 15 | 140 | 95 | 56 | 30 | 5 | 2 | 8,3 |

Finishing: Galvanized



CANTILEVER GATE

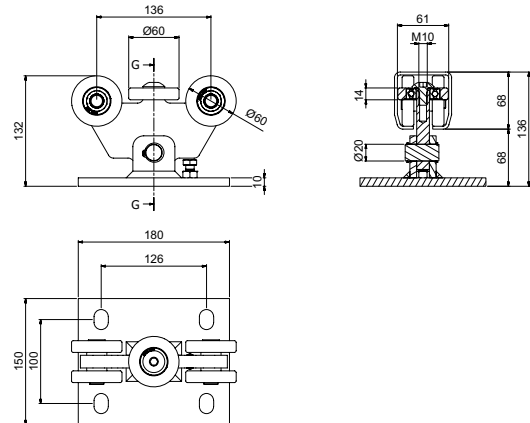
Life made easy

CGS-350.5 Mini

5 wheels cantilever carriage for gates
 Chariot autoportant 5 roues pour portails
 5-rädrieger Laufwagen für freitragende Tore
 Carro autoportante 5 ruedas para puertas correderas
 Самонесущая тележка 5 колес для откатных ворот

FEATURES

- Monoblock body that ensures strenght to the structure
- Suitable to humid climate to avoid the carriage corrosion
- Noiseless bearings of new generation shielded to protect against dust suitable for temperatures from -30 ° C to + 80 ° C
- 4 support wheels for each carriage
- Alignment Central wheel
- Central rotation pin

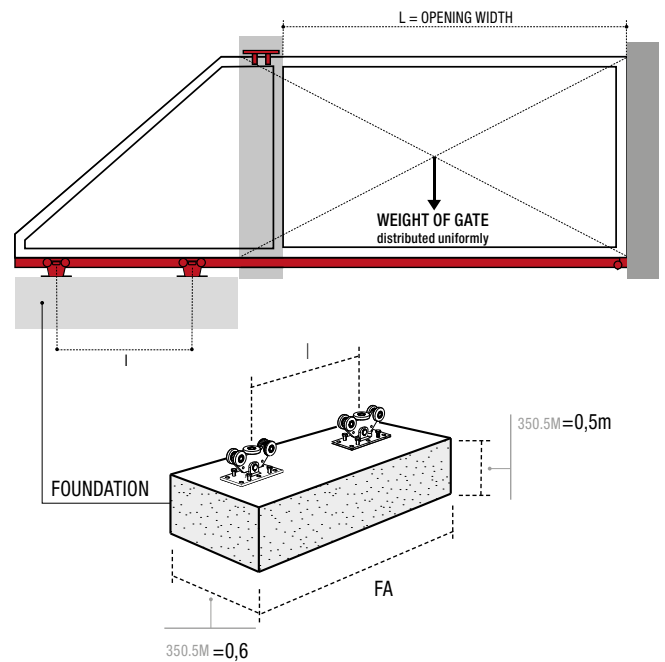


| CODE | ART. | Size | Box info | |
|--------------|-------------|------|--------------|-----|
| | | | Pcs per pack | Kg |
| 10130001 001 | CGS-350.5 M | Mini | 1 | 5,2 |

Finishing: Galvanized

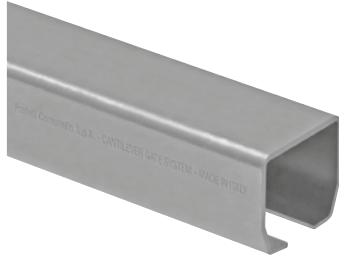
Minimum dimensions of the reinforced concrete casting
 Dimensions minimums du coulage du ciment armé
 Mindestgröße des Stahlbetonguss
 Dimensiones mínimas colada cemento armado
 Минимальные размеры железобетонной стяжки

| CGS 350.5 Mini (F1max=600 Kg) | | | | | | | | | | |
|-------------------------------|--------|-------|---------|-------|--------|-------|---------|-------|--------|-------|
| | L=3 m | | L=3,5 m | | L=4 m | | L=4,5 m | | L=5 m | |
| Weight (Kg) | FA (M) | I (M) | FA (M) | I (M) | FA (M) | I (M) | FA (M) | I (M) | FA (M) | I (M) |
| 100 | 1,30 | 0,40 | 1,40 | 0,50 | 1,50 | 0,60 | 1,60 | 0,70 | 1,70 | 0,80 |
| 125 | 1,50 | 0,60 | 1,60 | 0,70 | 1,70 | 0,80 | 1,80 | 0,90 | 1,90 | 1,00 |
| 150 | 1,60 | 0,70 | 1,70 | 0,80 | 1,80 | 0,90 | 2,00 | 1,10 | 2,10 | 1,20 |
| 175 | 1,80 | 0,90 | 1,90 | 1,00 | 2,00 | 1,20 | 2,20 | 1,30 | 2,40 | 1,50 |
| 200 | 1,90 | 1,00 | 2,10 | 1,20 | 2,30 | 1,40 | 2,50 | 1,60 | 2,70 | 1,80 |
| 225 | 2,10 | 1,20 | 2,30 | 1,40 | 2,50 | 1,70 | 2,80 | 1,90 | 3,00 | 2,10 |
| 250 | 2,40 | 1,50 | 2,60 | 1,70 | 2,90 | 2,00 | 3,10 | 2,20 | 3,40 | 2,50 |

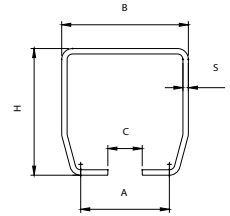


CGS-345M

Monorail for cantilever gates
 Rails pour portails autoportants
 Einfachschiene für selbsttragende Tore
 Monocarril para puertas autoportantes
 Монорельс для самонесущих ворот



| CODE | ART. | Size | Finishing | A | B | C | H | S | L | Box info | |
|--------------|----------|------|-----------|----|-----|----|-----|-----|------|--------------|-------|
| | | | | | | | | | | Pcs per pack | Kg |
| 10207001 | CGS-345M | Mini | Raw | 48 | 68 | 23 | 68 | 3,5 | 3000 | 1 | 18,25 |
| 10207002 | CGS-345M | Mini | Raw | 48 | 68 | 23 | 68 | 3,5 | 6000 | 1 | 36,50 |
| 10207001 001 | CGS-345M | Mini | Zinc | 98 | 140 | 38 | 140 | 6 | 3000 | 1 | 67,0 |
| 10207002 001 | CGS-345M | Mini | Zinc | 98 | 140 | 38 | 140 | 6 | 6000 | 1 | 134,0 |



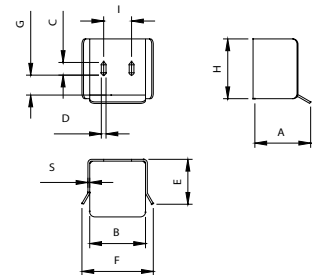
CGS-346M

Bottom end cup to be fixed
 Butée inférieure à fixer
 Unterauflageschuh zum Aufschrauben
 Encuentro inferior para fijar
 Прикрепляемый нижний упор



| CODE | ART. | Size | A | B | C | D | E | F | G | H | I | S | Box info | |
|--------------|----------|------|-----|----|----|---|----|-----|----|----|----|---|--------------|-----|
| | | | | | | | | | | | | | Pcs per pack | Kg |
| 10705501 001 | CGS-346M | Mini | 104 | 78 | 25 | 9 | 75 | 114 | 25 | 91 | 38 | 4 | 2 | 2,3 |

Finishing: Galvanized



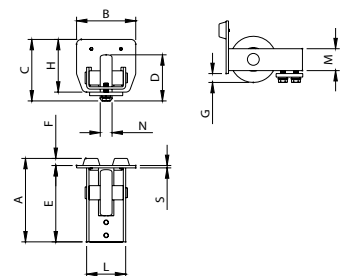
CGS-347M

End wheel for monorail
 Galet d'extrémité pour rail
 Endrad für Einfachschiene
 Rueda terminal para monocarril
 Концевое колесо монорельса



| CODE | ART. | Size | A | B | C | D | E | F | G | H | L | M | N | S | Box info | |
|--------------|----------|------|-----|----|------|-----|-----|----|------|----|----|----|----|---|--------------|-----|
| | | | | | | | | | | | | | | | Pcs per pack | Kg |
| 10705001 001 | CGS-347M | Mini | 135 | 68 | 82,5 | Ø68 | 123 | 12 | 14,5 | 68 | 45 | 32 | 15 | 4 | 2 | 2,0 |

Finishing: Galvanized



CANTILEVER GATE

Gate innovation made in Comunello

 **COMUNELLO GATE**

FRATELLI COMUNELLO S.P.A.

Via Cassola, 64 - C.P. 79

36027 Rosà, Vicenza, Italy

Tel. +39 0424 585111 Fax +39 0424 533417

info@comunello.it www.comunello.com