

CGS-450.9-20K

New carriage with **20.000 KG** capacity for heavy cantilever gates
Up to **30 m** opening width

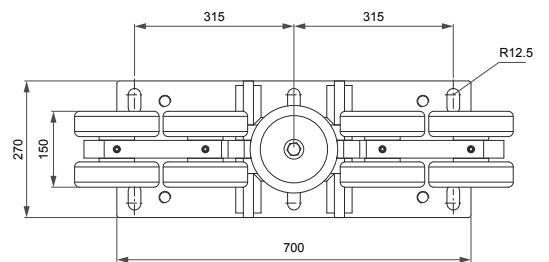
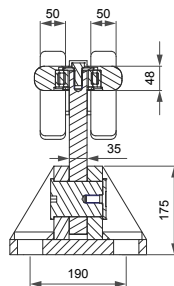
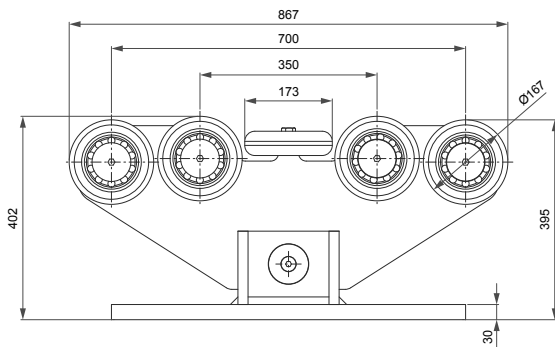
CGS-450.9-20K

20.000 KG capacity carriage for heavy cantilever gates, up to **30 m** opening width



FEATURES

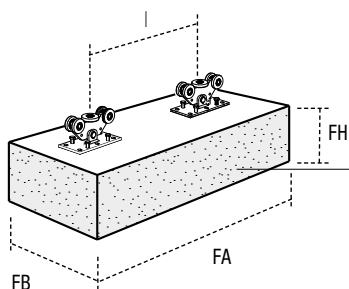
- 35 mm thick monoblock steel body
- High capacity shielded bearing to ensure high load performance
- All components are made of high quality steel
- Alignment central wheel to ensure stability during movement
- Adjustment screws for planarity
- Very strong base with adjustable slots



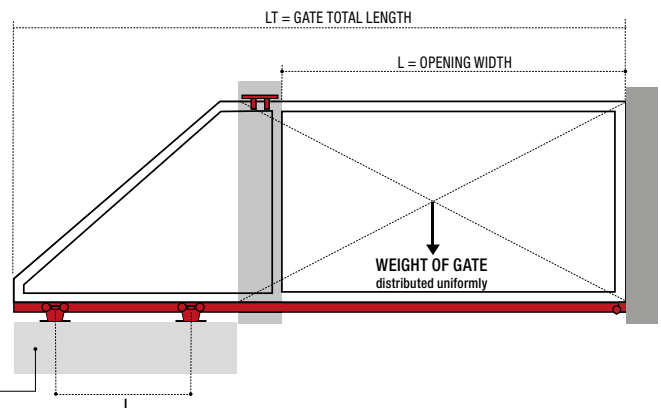
CODE	ART.	Size	Box info	
			Pcs per pack	Kg
10130070 001	CGS-450.9-20K	Grande	1	198

Finishing: Galvanized

For the structural calculation of the foundation (FA, FB, FH), the distance between the carriages (l) and the type of anchoring, it is recommended to contact a design studio. The total length of the gate (LT) depends on the calculated distance l.



FOUNDATION

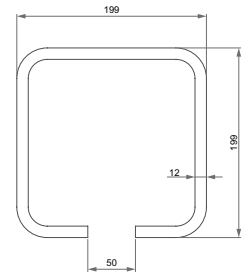


CGS-495-20K

Monorail for cantilever gates



CODE	ART.	Length mm	Finishing	Box info	
				Pcs per pack	Kg
10207040	CGS-495-20K	3000	Raw	1	195



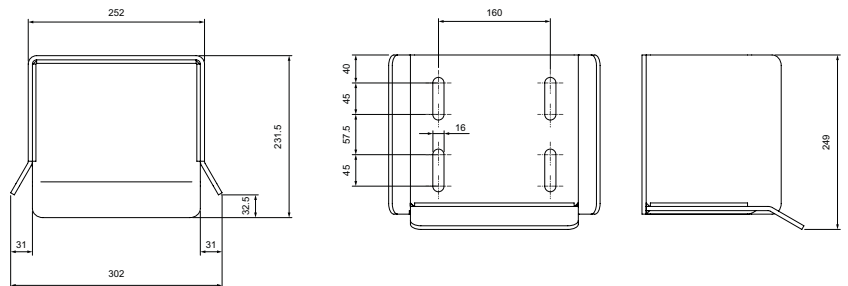
CGS-496-20K

Bottom end cup to be fixed



CODE	ART.	Box info	
		Pcs per pack	Kg
10705520 001	CGS-496-20K	1	9,5

Finishing: Galvanized



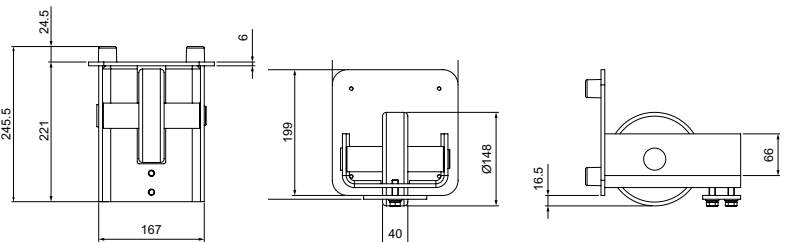
CGS-497-20K

End wheel for monorail



CODE	ART.	Box info	
		Pcs per pack	Kg
10705020 001	CGS-497-20K	2	23

Finishing: Galvanized



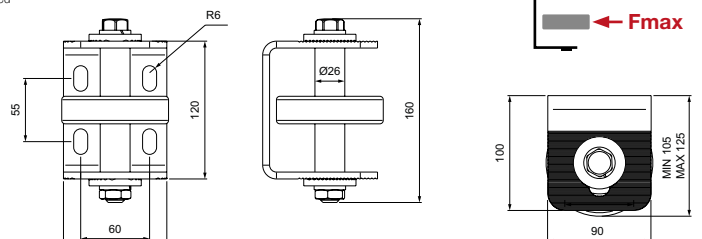
CGS-499

Guide plate for sliding gates and self-supporting



CODE	ART.	Capacity Fmax	Box info	
			Pcs per pack	Kg
11310401 001	CGS-499	500 Kg	2	4

Finishing: Galvanized



Gate innovation made in Comunello

 **COMUNELLO GATE**

FRATELLI COMUNELLO S.P.A.

Via Cassola, 64 - C.P. 79

36027 Rosà, Vicenza, Italy

Tel. +39 0424 585111 Fax +39 0424 533417

info@comunello.it www.comunello.com