

FAST

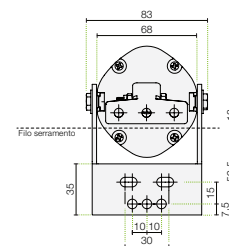
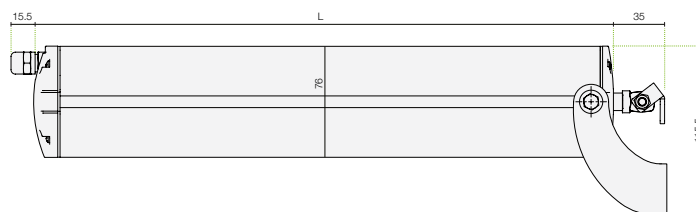
Attuatore elettrico a stelo per apertura e chiusura di finestre a sporgere, a lamelle, pale frangisole e cupole



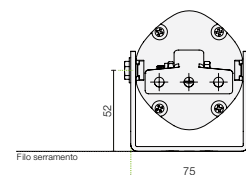
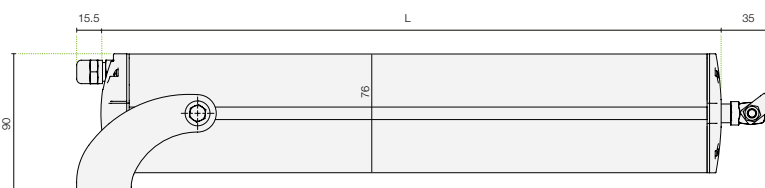
Fissaggio regolabile su binario

Aggancio rapido Attacchi facili e veloci

Pale frangisole



Apertura a sporgere



FAST

230
Vac

+50°C
-5°C

IP55
protection

100%
made in
ITALY

3
YEARS
warranty

100%
TESTED



Articolo	Codice	L	Corsa	Velocità	Forza	Potenza	Pcs/pack	Kg/pack
■ FAST-160	MFAST160HOB00	300	160 mm	19 mm/sec	500 N	170W	1	1.65
■ FAST-200	MFAST200HOB00	300	200 mm	19 mm/sec	500 N	170W	1	1.68
■ FAST-300	MFAST300HOB00	400	300 mm	19 mm/sec	500 N	170W	1	1.70
■ FAST-400	MFAST400HOB00	500	400 mm	19 mm/sec	500 N	170W	1	1.75

Accessori

		Codice	Pcs/pack	Kg/pack
STAFFA DI SUPPORTO		MFASTS01NOG00	10	2.06
ATTACCO PER FINESTRE		MR00AA01NOG00	30	2.04

