

**COMUNELLO**  
AUTOMATION

Timeless Design  
Time Less Installation  
Made in Comunello



**LIMIT** SERIES

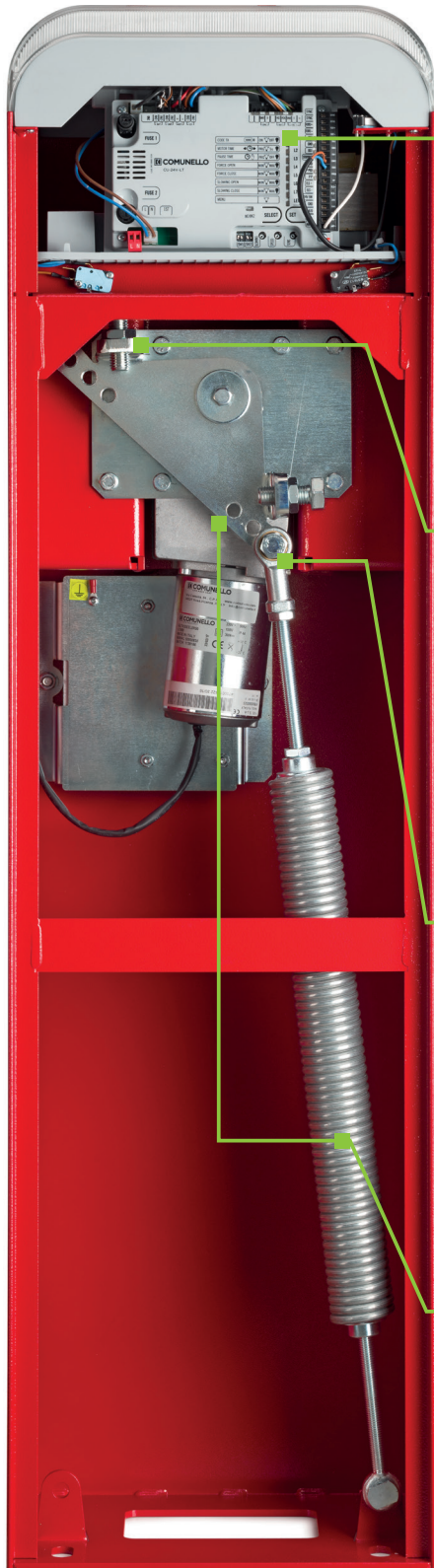
LIMIT 500    LIMIT 600    LIMIT 800



# LIMIT 500 - 600

**NEW**

**COMUNELLO**  
AUTOMATION



## 01 High Performance **ELECTRONICS**

Easily accessible built-in control board.  
Led/trimmer adjustments for easy set-up and diagnose.  
Integrated **encoder** for more precise and safer speed reducer control.

## 02 **LIMIT SWITCH**

Smooth limit-switch set-up.  
Micro-switch and mechanical stop adjustment from one screw.

## 03 **SPHERICAL EYELET**

Eyelet-fixed spring for smoother, wear reducing movement

## 04 **ONE SPRING**

Aluminium reducer and metal gears, all Made by Comunello.  
Three fixing holes allow for the use of **one single spring for different bar lengths.**





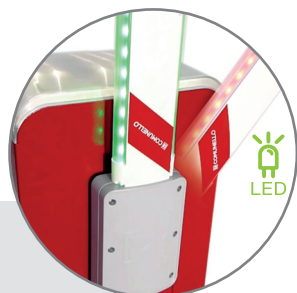
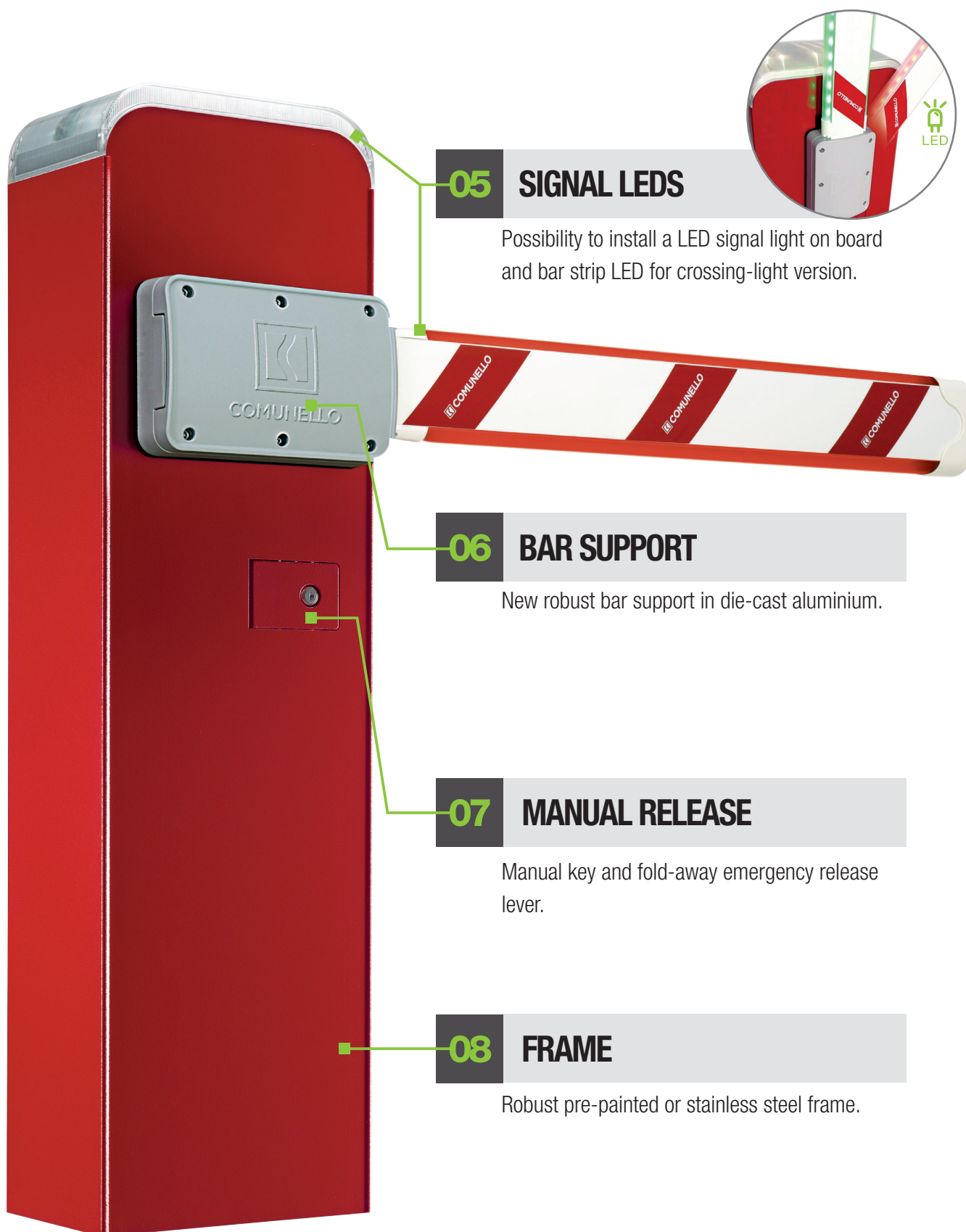


# LIMIT 500 - 600

**NEW**

# COMUNELLO

AUTOMATION



## 05 SIGNAL LEDS

Possibility to install a LED signal light on board and bar strip LED for crossing-light version.

## 06 BAR SUPPORT

New robust bar support in die-cast aluminium.

## 07 MANUAL RELEASE

Manual key and fold-away emergency release lever.

## 08 FRAME

Robust pre-painted or stainless steel frame.



# LIMIT 500

**NEW**

**COMUNELLO**  
AUTOMATION

Electromechanical 24V barrier raising systems with encoder for residential, public or industrial use  
For entrances up to 5 m in width



AVAILABLE FINISHES:



**LIMIT 500**

For entrances up to 5 m

SUITABLE FOR  
**INTENSIVE USE**

AVAILABLE MODELS:



AVAILABLE FINISHES:



ARTICLE	LIMIT 500 24V
Power supply	230 VAC
Operator power supply	24 VDC
Power consumption	150 W
Current input	6,2 A
Torque	300 Nm
Operating time	3 - 6 sec
Duty cycle	intensive use
Protection rating (IP)	IP44
Insulation class	2
Working temperature	-20°C / +50°C
Integrated control unit	CU 24V LT
Limit switch	Electromechanical
Encoder	Yes
Weight	65 kg

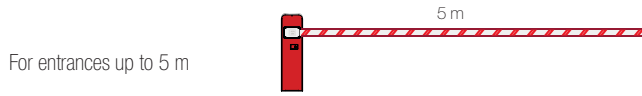
LIMIT 500 SPRING STRETCHER TOOL	ARM LENGTH (M)			
	2 m	3 m	4 m	5 m
ARM	1	2	3	3
ARM WITH IMPACT PROTECTION STRIPS AND LEDS	1	2	3	3
ARM WITH IMPACT PROTECTION STRIPS AND LEDS AND POGO END REST	1	2	3	3
ARM WITH SINGLE IMPACT PROTECTION STRIP, LEDS AND SKIRT	-	2	3	3
ARM WITH SINGLE IMPACT PROTECTION STRIP, LEDS, SKIRT AND POGO END REST	-	3	3	3



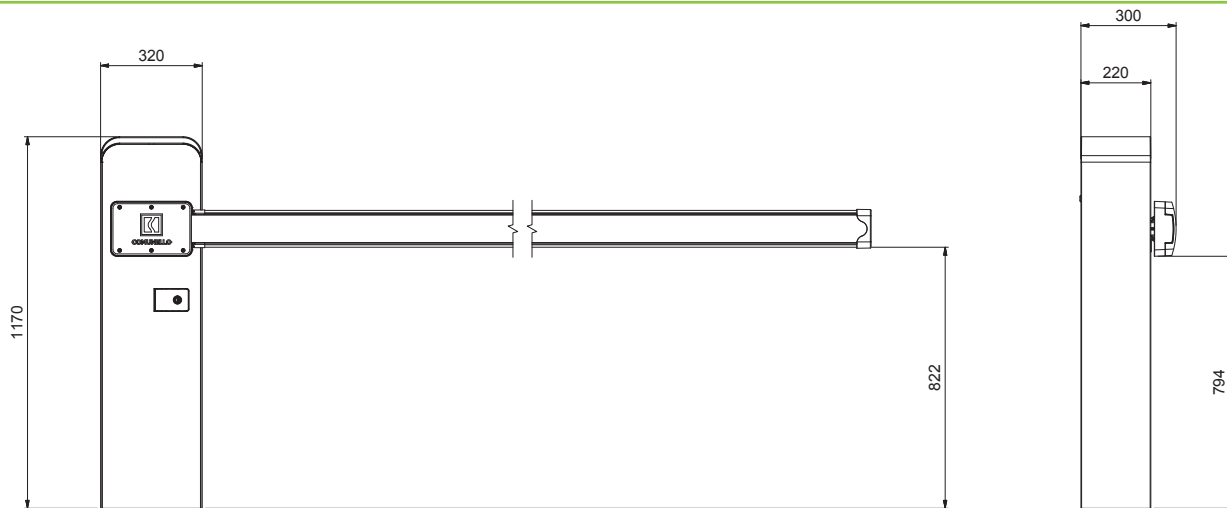


# LIMIT 500

**COMUNELLO**  
AUTOMATION



## DIMENSIONS



## MAIN FITTINGS



**AC 40**  
SIGNAGE TABLE



**AC 500**  
FOUNDATION ANCHORING KIT



**AC 540**  
ONE BAR SPRING



**AC 560**  
BAR SUPPORT



**AC 570**  
MOBILE BAR SUPPORT



**AC 580**  
90° JOINTED ROD



**AC 630 / AC 640 / AC 650**  
ALUMINIUM RECTANGULAR BAR,  
RAL 9010. 3 / 4 / 5 M.



**AC 670 / AC 680 / AC 690**  
RED BARRIER BAR COVER  
3 / 4 / 5 M



**AC 700**  
BARRIER COVER PLUG



**AC 710**  
BARRIER COVER PLUG



**AC 715**  
BARRIER COVER PLUG



**AC 590**  
2 M CURTAIN



**AC 660**  
REFLECTIVE ADHESIVE STRIPS



**AC 770**  
INTERNAL LED LIGHTS



**AC 800**  
5 M LED STRIP



**AC 30**  
OUTDOOR ANTENNA



**AC 240**  
INDUCTIVE SENSOR



**DART**  
PHOTOCELLS



**SWIFT LED**  
BLINKING WARNING LIGHTS



**VICTOR 2 RC**  
2 CHANNEL, ROLLING CODE  
REMOTE CONTROL



**INDEX**  
KEY SELECTOR SWITCH



**TACT RADIO**  
DIGITAL SWITCH WITH  
RADIO CONTROLLED KEYPAD



**MAST 50**  
EXTRUDED ALUMINIUM COLUMN  
H 50 CM



# LIMIT 600

**NEW**

**COMUNELLO**  
AUTOMATION

Electromechanical 24V barrier raising systems with encoder for residential, public or industrial use  
For entrances up to 6 m in width



24 VDC **E** ENCODER **DUAL KIT**

**LIMIT 600**

For entrances up to 6 m

SUITABLE FOR  
**INTENSIVE USE**

AVAILABLE MODELS:



AVAILABLE FINISHES:



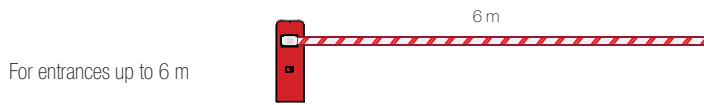
ARTICLE	LIMIT 600 24V
Power supply	230 VAC
Operator power supply	24 VDC
Power consumption	150 W
Current input	6,2 A
Torque	300 Nm
Operating time	4 - 6 sec
Duty cycle	intensive use
Protection rating (IP)	IP44
Insulation class	2
Working temperature	-20°C / +50°C
Integrated control unit	CU 24V LT
Limit switch	Electromechanical
Encoder	Yes
Weight	65 kg

LIMIT 600 SPRING STRETCHER TOOL	ARM LENGTH (M)				
	2 m	3 m	4 m	5 m	6 m
ARM	1-2	1-2-3	3	3	3
ARM WITH IMPACT PROTECTION STRIPS AND LEDS	1-2	3	3	3	3
ARM WITH IMPACT PROTECTION STRIPS AND LEDS AND POGO END REST	1-2	3	3	3	3
ARM WITH SINGLE IMPACT PROTECTION STRIP, LEDS AND SKIRT	-	3	3	3	-
ARM WITH SINGLE IMPACT PROTECTION STRIP, LEDS, SKIRT AND POGO END REST	-	3	3	3	-

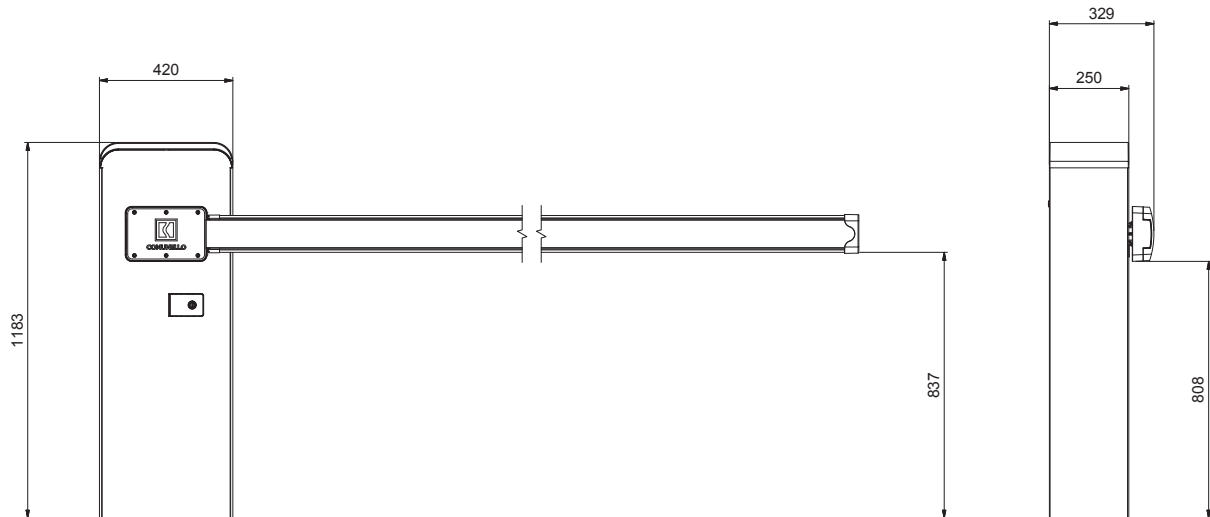


# LIMIT 600

**COMUNELLO**  
AUTOMATION



## DIMENSIONS



## MAIN FITTINGS



**AC 40**  
SIGNAGE TABLE



**AC 510**  
FOUNDATION ANCHORING KIT



**AC 541**  
ONE BAR SPRING



**AC 560**  
BAR SUPPORT



**AC 570**  
MOBILE BAR SUPPORT



**AC 580**  
90° JOINTED ROD



**AC 655**  
ALUMINIUM RECTANGULAR BAR, RAL 9010, 6 M



**AC 695**  
RED BAR COVER, 6 M.



**AC 700**  
BARRIER COVER PLUG



**AC 710**  
BARRIER COVER PLUG



**AC 715**  
BARRIER COVER PLUG



**AC 590**  
2 M CURTAIN



**AC 660**  
REFLECTIVE ADHESIVE STRIPS



**AC 770**  
INTERNAL LED LIGHTS



**AC 800**  
5 M LED STRIP



**AC 30**  
OUTDOOR ANTENNA



**AC 240**  
INDUCTIVE SENSOR



**DART**  
PHOTOCELLS



**SWIFT LED**  
BLINKING WARNING LIGHTS



**VICTOR 2 RC**  
2 CHANNEL, ROLLING CODE  
REMOTE CONTROL



**INDEX**  
KEY SELECTOR SWITCH



**TACT RADIO**  
DIGITAL SWITCH WITH  
RADIO CONTROLLED KEYPAD



**MAST 50**  
EXTRUDED ALUMINIUM COLUMN  
H 50 CM





# LIMIT 800

## COMUNELLO AUTOMATION

Electromechanical 24V barrier raising systems with encoder for residential, public or industrial use  
For entrances up to 8 m in width



24 VDC **E** ENCODER **DUAL KIT**

**LIMIT 800**

For entrances up to 8 m

SUITABLE FOR  
**INTENSIVE USE**  
(40%)

AVAILABLE MODELS:



AVAILABLE FINISHES:



ARTICLE	LIMIT 800 24V
Power supply	230 VAC
Operator power supply	24 VDC
Power consumption	150 W
Current input	6,2 A
Torque	300 Nm
Operating time	4 - 6 sec
Duty cycle	40%
Protection rating (IP)	IP44
Insulation class	2
Working temperature	-20°C / +50°C
Integrated control unit	CU 24V LT
Limit switch	Electromechanical
Encoder	Yes
Weight	95 kg

BAR ASSEMBLY AND SPRING CHOICE	LENGTH (METERS)				
	6,0	6,5	7,0	7,5	8,0
Bar	○	●	●	●	●
Bar with swing down support	●	●	●	●	●
Bar with joint	○	●	●	●	●

○ Medium spring AC 540    ● Double spring AC 550



# LIMIT 800

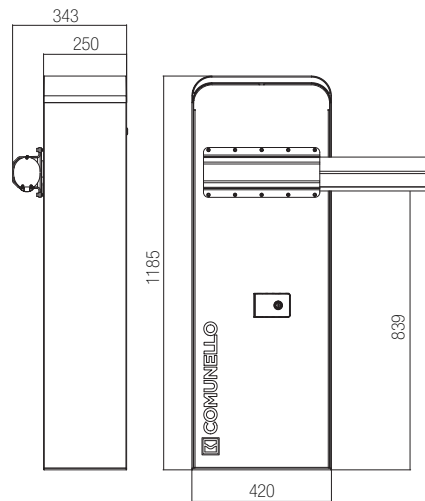
**COMUNELLO**  
AUTOMATION



For entrances up to 10 m  
(5+5 m)



## DIMENSIONS



## MAIN FITTINGS



**AC 40**  
SIGNAGE TABLE



**AC 510**  
FOUNDATION ANCHORING KIT



**AC 540**  
SPRING FOR LIGHT BAR



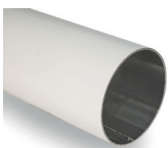
**AC 550**  
SPRING FOR LIGHT BAR



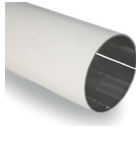
**AC 560**  
BAR SUPPORT



**AC 570**  
MOBILE BAR SUPPORT



**AC 730 / AC 740 / AC 750**  
ROUND BAR WHITE  
RAL 9010, 3 / 4 / 5 M.



**AC 760**  
ROUND BAR JOINT



**AC 590**  
2 M CURTAIN



**AC 660**  
REFLECTIVE ADHESIVE STRIPS



**AC 770**  
INTERNAL LED LIGHTS



**AC 30**  
OUTDOOR ANTENNA



**AC 240**  
INDUCTIVE SENSOR



**DART**  
PHOTOCELLS



**SWIFT LED**  
BLINKING WARNING LIGHTS



**VICTOR 2 RC**  
2 CHANNEL, ROLLING CODE  
REMOTE CONTROL



**INDEX**  
KEY SELECTOR SWITCH



**TACT RADIO**  
DIGITAL SWITCH WITH  
RADIO CONTROLLED KEYPAD



**MAST 50**  
EXTRUDED ALUMINIUM COLUMN  
H 50 CM

# 1 AUTOMATIC RECOGNITION



This highly intelligent control unit can detect and identify all the peripheral accessories regardless of the terminal to which they are attached.

# 2 CONNECTION



With the one touch set-up it will complete a standard installation in seconds.



# 3 EASY TO USE



ONE technology when used through the [Comunello One App](#) can provide the most complete and articulated professional set-up in remote, but also can satisfy the requirements of a less experienced installer.

Complete programming, simple,



## RECOGNITION OF THE ACCESSORIES

All accessories have an extremely easy 2 input bus connection and can be connected to the bus connection area terminals in any position.

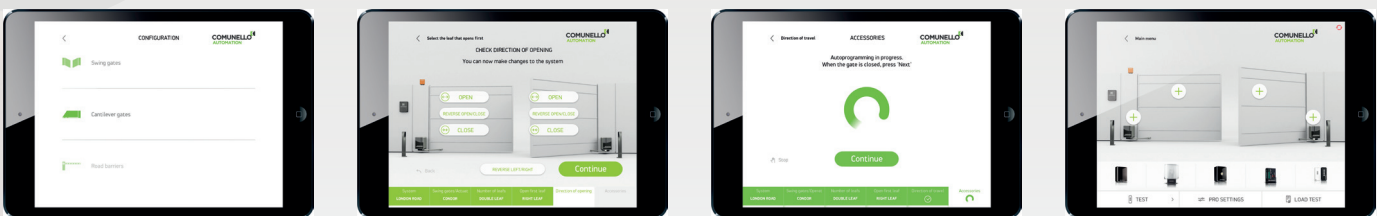


## THROUGH WI-FI

The same easy set-up can also be achieved using the Komunello ONE APP connected through the K-ONE wi-fi key.



## PROGRAM



, intuitive and extremely precise!

# COMUNELLO

AUTOMATION

JOB70739 Rev.00 (01/2018)



**FRATELLI COMUNELLO S.P.A.**

Via Cassola,64 - C.P.79  
36027 Rosà, Vicenza, Italy  
Tel. +39 0424 585111 Fax +39 0424 533417  
info@comunello.it - www.comunello.com